



Pennsylvania State System
of Higher Education

Board of Governors'
Quarterly Meeting
Agenda

October 7-8, 2009

Administration Building
Dixon University Center
2986 North Second Street
Harrisburg, PA 17110-1201
Telephone: (717) 720-4420



Pennsylvania State System of Higher Education

Board of Governors' Quarterly Meeting Agenda

Wednesday, October 7, 2009

1:30 p.m.

Committee Meetings

- Academic and Student Affairs
- Advancement
- Finance, Administration, and Facilities
- Human Resources
- Information Technology
- Executive

Thursday, October 8, 2009

8:30 a.m.

Meeting of the Board of Governors

Adjournment



Pennsylvania State System of Higher Education

Board of Governors' Quarterly Meeting Agenda

Boardroom, First Floor
Administration Building
Dixon University Center
2986 North Second Street
Harrisburg, PA 17110-1201

Wednesday, October 7, 2009
1:30 p.m.

Agenda Summary

- **Academic and Student Affairs**
 - PASSHE University Enrollments for Fall 2009 (INFORMATION)
 - Enrollments in Programs Approved in the Past Five Years by University (INFORMATION)
 - The Washington Center for Internships and Academic Seminars Presentation (INFORMATION)
 - Presentation on Clarion University of Pennsylvania – Venango Campus Partnerships (INFORMATION)
 - Revisions to Venture Capital Loan Program (ACTION)
- **Advancement**
 - Governmental Relations Update (INFORMATION)
 - Budget Update (INFORMATION)
- **Finance, Administration, and Facilities**
 - Operating Budget Update (INFORMATION)
 - Fiscal Year 2009/10 Educational and General Appropriation Allocation (ACTION)
 - Fiscal Year 2009/10 Program Initiatives Line Item Allocation (ACTION)
 - Series AK Bond Sale Results (INFORMATION)
 - Official Residence Renovation, Edinboro University of Pennsylvania (INFORMATION)
- **Human Resources**
 - Review of Board of Governors' Policy 2002-03, *Evaluating Presidents* (INFORMATION)

- **Information Technology**
 - Information Technology Update (INFORMATION)
 - Board of Governors' Policy 2009-02: *Acceptable Use of Technology* (ACTION)

- **Executive**
 - H1N1 Emergency Preparedness (INFORMATION)
 - Board of Governors' Policy 2009-03: *Social Equity* (ACTION)

- **Board**
 - Resolution (ACTION)
 - Kathleen M. Shaw



Pennsylvania State System of Higher Education

Academic and Student Affairs Committee Meeting

Boardroom, First Floor
Administration Building
Dixon University Center
2986 North Second Street
Harrisburg, PA 17110-1201

Wednesday, October 7, 2009

Agenda

<u>Item</u>	<u>Page</u>
1. PASSHE University Enrollments for Fall 2009 (INFORMATION)	6
2. Enrollments in Programs Approved in the Past Five Years by University (INFORMATION)	7
3. The Washington Center for Internships and Academic Seminars Presentation (INFORMATION)	13
4. Presentation on Clarion University of Pennsylvania – Venango Campus Partnerships (INFORMATION).....	14
5. Revisions to Venture Capital Loan Program (ACTION)	15



Committee Members: Aaron A. Walton (*Chair*), Representative Matthew E. Baker, Donna Cooper (designee for Secretary Gerald L. Zahorchak), Richard Kneedler, Senator Jeffrey E. Piccola, Secretary Gerald L. Zahorchak and Kenneth M. Jarin (*ex officio*).

For further information, contact Peter H. Garland at (717) 720-4010.

Academic and Student Affairs Committee Meeting
October 7, 2009

SUBJECT: PASSHE University Enrollments for Fall 2009 (INFORMATION)

UNIVERSITIES AFFECTED: All

BACKGROUND: By early October of each academic year, PASSHE Universities provide fall semester enrollment data on student population to the Board of Governors. These data are comprised of official headcount enrollments by university, program level, attendance status, ethnicity and residency.

A presentation on the 2009 profile of PASSHE students will be made at the October 7 meeting.

Supporting Documents Included: N/A

Other Supporting Documents Available: Fall 2009 Enrollment Presentation

Reviewed by: N/A

Prepared by: James D. Moran

Telephone: (717) 720-4200

Academic and Student Affairs Committee Meeting
October 7, 2009

SUBJECT: Enrollments in Programs Approved in the Past Five Years by University
(INFORMATION)

UNIVERSITIES AFFECTED: All

BACKGROUND: New academic programs have been approved over the past five years in response to market needs and student interests. Important to the approval process is an assessment of those needs and interests through enrollment projections. To determine if recently approved programs are on target for meeting their enrollment projections, the Board asked at its July 15, 2009 quarterly meeting for enrollment data and a comparison of enrollments to the projections that were provided at the time the programs were approved.

Supporting Documents Included: Report on Status of Enrollments of Academic Programs Approved in the Past Five Years

Other Supporting Documents Available: Enrollments and Projections for Programs Approved in the Past Five Years

Reviewed by: Chief Academic Officers, September 25, 2009

Prepared by: James D. Moran

Telephone: (717) 720-4200

Report on Status of Enrollments of Academic Programs Approved in the Past Five Years

Note: Enrollments are taken from the fall semester of the academic year

Bloomsburg University

BS Computer Forensics

	2004-05	2005-06	2006-07	2007-08	2008-09
Actual Enrollments			21	81	111
Projected Enrollments			20	51	81

MED Guidance Counseling

	2004-05	2005-06	2006-07	2007-08	2008-09
Actual Enrollments				7	35
Projected Enrollments				69	119

California University

MS Sport Management Studies

	2004-05	2005-06	2006-07	2007-08	2008-09
Actual Enrollments	171	294	404	468	459
Projected Enrollments	30	30	60	60	60

MS Legal Studies and Public Policy

	2004-05	2005-06	2006-07	2007-08	2008-09
Actual Enrollments	39	95	114	131	136
Projected Enrollments	50	130	220	300	350

MS Tourism Planning and Development

	2004-05	2005-06	2006-07	2007-08	2008-09
Actual Enrollments			11	10	7
Projected Enrollments			30	30	60

Cheyney University

MPA Public Administration

	2004-05	2005-06	2006-07	2007-08	2008-09
Actual Enrollments		7	24	20	35
Projected Enrollments		15	20	25	30

Clarion University

AAS Industrial Technology

	2004-05	2005-06	2006-07	2007-08	2008-09
Actual Enrollments	31	55	70	66	81
Projected Enrollments	20	40	40	40	40

AS Respiratory Care

	2004-05	2005-06	2006-07	2007-08	2008-09
Actual Enrollments			10	34	37
Projected Enrollments			25	25	25

AAS Administration Technology

	2004-05	2005-06	2006-07	2007-08	2008-09
Actual Enrollments			2	7	6
Projected Enrollments			8	16	24

East Stroudsburg University

BA Art and Design

	2004-05	2005-06	2006-07	2007-08	2008-09
Actual Enrollments	28	38	48	56	72
Projected Enrollments	8	10	12	15	18

MS Management and Leadership

	2004-05	2005-06	2006-07	2007-08	2008-09
Actual Enrollments	14	15	30	42	62
Projected Enrollments	25	40	40	40	40

MS Athletic Training

	2004-05	2005-06	2006-07	2007-08	2008-09
Actual Enrollments					25
Projected Enrollments					25

Edinboro University

BA Women's Studies

	2004-05	2005-06	2006-07	2007-08	2008-09
Actual Enrollments			2	6	4
Projected Enrollments			10	12	16

Indiana University

MS Health and Physical Education

	2004-05	2005-06	2006-07	2007-08	2008-09
Actual Enrollments			72	84	95
Projected Enrollments			22	44	44

Ph.D. Nursing

	2004-05	2005-06	2006-07	2007-08	2008-09
Actual Enrollments					17
Projected Enrollments					9

BA Asian Studies

	2004-05	2005-06	2006-07	2007-08	2008-09
Actual Enrollments					7
Projected Enrollments					10

MS Health Services Administration

	2004-05	2005-06	2006-07	2007-08	2008-09
Actual Enrollments					12
Projected Enrollments					11

Kutztown University

BS Biochemistry

	2004-05	2005-06	2006-07	2007-08	2008-09
Actual Enrollments		7	17	13	32
Projected Enrollments		26	30	35	40

BS Leisure and Sport Studies

	2004-05	2005-06	2006-07	2007-08	2008-09
Actual Enrollments			76	158	226
Projected Enrollments			30	60	90

BA German Studies

	2004-05	2005-06	2006-07	2007-08	2008-09
Actual Enrollments			2	2	3
Projected Enrollments			10	12	20

Lock Haven University

AAS Nanotechnology

	2004-05	2005-06	2006-07	2007-08	2008-09
Actual Enrollments			1	2	2
Projected Enrollments			5	10	12

Mansfield University

MSN Nursing

	2004-05	2005-06	2006-07	2007-08	2008-09
Actual Enrollments	26	42	31	27	30
Projected Enrollments	25	23	28	26	28

MA Graphic Design

	2004-05	2005-06	2006-07	2007-08	2008-09
Actual Enrollments					17
Projected Enrollments					10

Millersville University

MS Emergency Management

	2004-05	2005-06	2006-07	2007-08	2008-09
Actual Enrollments				19	26
Projected Enrollments				12	22

Millersville University and Shippensburg University Joint Program

MSW Social Work

	2004-05	2005-06	2006-07	2007-08	2008-09
Actual Enrollments			34	88	111
Projected Enrollments			30	84	92

Shippensburg University

BS Exercise Science

	2004-05	2005-06	2006-07	2007-08	2008-09
Actual Enrollments	4	30	56	109	129
Projected Enrollments	30	60	90	120	120

BS Health Care Administration

	2004-05	2005-06	2006-07	2007-08	2008-09
Actual Enrollments		13	30	33	32
Projected Enrollments		50	50	50	50

Slippery Rock University

BA Criminology and Criminal Justice

	2004-05	2005-06	2006-07	2007-08	2008-09
Actual Enrollments					235
Projected Enrollments					120

MS Adapted Physical Activity

	2004-05	2005-06	2006-07	2007-08	2008-09
Actual Enrollments					13
Projected Enrollments					14

West Chester University

MED Early Childhood Education

	2004-05	2005-06	2006-07	2007-08	2008-09
Actual Enrollments	1	8	8	43	60
Projected Enrollments	10	23	26	26	26

Academic and Student Affairs Committee Meeting October 7, 2009

SUBJECT: The Washington Center for Internships and Academic Seminars Presentation (INFORMATION)

UNIVERSITIES AFFECTED: All

BACKGROUND: The Washington Center for Internships and Academic Seminars will recognize the Pennsylvania State System of Higher Education as its "University System of the Year" at an awards luncheon to be held October 19, 2009, at the National Press Club in Washington, D.C., and later that evening at a gala to be held at the National Building Museum.

More than 250 PASSHE students have participated in the Washington Center's internship program since 2002, including 90 in the past two years. They have been placed with a variety of government, business, non-profit and international organizations, including the U.S. Environmental Protection Agency and departments of Commerce and Health and Human Services, the Library of Congress, Voice of America, the Institute of World Politics, the Congressional Hispanic Leadership Institute, the Constituency for Africa, the National Cancer Registrars Association and the Peace Corps. Information about The Washington Center can be found at www.twc.edu

Karen J. Primm, director of the Internship Center at California University of Pennsylvania, and Diane Stipcak, of the Career Development Center at Indiana University of Pennsylvania, will make a presentation on the internship program and how it has benefited PASSHE students.

Supporting Documents Included: N/A

Other Supporting Documents Available: N/A

Reviewed by: N/A

Prepared by: James D. Moran

Telephone: (717) 720-4200

Academic and Student Affairs Committee Meeting
October 7, 2009

SUBJECT: Presentation on Clarion University of Pennsylvania – Venango Campus Partnerships (INFORMATION)

UNIVERSITIES AFFECTED: Clarion University of Pennsylvania

BACKGROUND: Educational partnerships provide opportunities to enhance and expand programs, extend educational outreach, share resources, and meet the changing needs of the Commonwealth and its workforce. Partnerships can provide a dynamic approach to delivering educational programs in a cost-effective manner, but they also present unique challenges. Effective partnerships require an appropriate match of institutional mission, vision, goals, and needs in order to succeed.

Clarion University is proud of its growing array of partnerships with organizations in business, industry, health care, education, and other sectors. Its Venango Campus in Oil City has realized significant growth in recent years due in large measure to partnerships in applied technology, nursing and allied health. Today's presentation will provide a functional definition of the partnership approach used by Clarion University, as well as description of a number of partner relationships that have successfully met the challenge of providing specialized educational opportunities for the areas served by the university.

Supporting Documents Included: N/A

Other Supporting Documents Available: Clarion University - Venango Campus Educational Partnerships Power Point Presentation

Reviewed by: N/A

Prepared by: Joseph P. Grunenwald

Telephone: (814) 393-2220

Academic and Student Affairs Committee Meeting October 7, 2009

SUBJECT: Revisions to Venture Capital Loan Program (ACTION)

UNIVERSITIES AFFECTED: All

BACKGROUND: At its June 1999 meeting, the Board of Governors established a Venture Capital Loan Program to assist Universities in the development or expansion of programs that responded to the Commonwealth's educational needs in the areas of science, technology, and workforce investment. This program was designed to provide start-up funds—as a partial grant, with the remainder as a loan—for initiatives that would become self-sustaining and provide a return on investment. Several initiatives were funded through this program, as approved by an ad hoc committee that included Board representation. The Board allocated a total of \$4.0 million from fiscal years 1999/2000 and 2000/01 Program Initiatives line items to fund the Venture Capital Loan Program. All loan repayments have been made, generating a current balance of \$3.6 million.

In order to continue using these funds for initiatives that are responsive to the current needs of the Commonwealth, it is proposed that this program be retooled as a grant program to support University collaborations designed to improve service to the Commonwealth through improved student learning and workforce development initiatives. As such, the Chancellor will award grants for appropriate collaborative projects and will report to the Board on the use of the funds and their success in improving service to the Commonwealth.

MOTION: That the Board of Governors approve the creation of a grant program from the remaining Venture Capital Loan Program funds, and authorize the Chancellor to award grants to Universities for collaborations designed to improve student learning, workforce development, and service to the Commonwealth.

Supporting Documents Included: N/A

Other Supporting Documents Available: June 1999 and July 2000 Board of Governors Meeting Minutes; Venture Capital Loan Program Guidelines

Reviewed by: N/A

Prepared by: James D. Moran

Telephone: (717) 720-4200



Pennsylvania State System of Higher Education

Advancement Committee Meeting

Boardroom, First Floor
Administration Building
Dixon University Center
2986 North Second Street
Harrisburg, PA 17110-1201

Wednesday, October 7, 2009

Agenda

<u>Item</u>	<u>Page</u>
1. Governmental Relations Update (INFORMATION)	17
2. Budget Update (INFORMATION)	21



Committee Members: Thomas M. “Doc” Sweitzer (*Chair*), Marie Conley Lammando, Senator Vincent J. Hughes, Joseph F. McGinn and Kenneth M. Jarin (*ex officio*).

For further information, contact Peter H. Garland at (717) 720-4010.

Advancement Committee Meeting
October 7, 2009

SUBJECT: Governmental Relations Update (INFORMATION)

UNIVERSITIES AFFECTED: All

BACKGROUND: A report is attached on recent legislative activity.

Supporting Documents Included: PASSHE Legislative Tracking Report, September 30, 2009

Other Supporting Documents Available: N/A

Reviewed by: N/A

Prepared by: Karen S. Ball

Telephone: (717) 720-4053

PASSHE Legislative Tracking Report
September 30, 2009

I. Budget Implementation

HB 1416 (D. Evans)-An Act to provide from the General Fund for the Expenses of the Executive, Legislative and Judicial Departments of the Commonwealth, the public debt and the public schools for the fiscal year July 1, 2009 to June 30, 2010. In Conference Committee with three members from each Chamber: Senators Pileggi, Corman and Costa and Representatives D. Evans, Eachus and Smith.

HB 1418 (D. Evans)-An Act providing for the capital budget for fiscal year 2009-10; itemizing transportation assistance projects; authorizing incurring of debt without approval of the electors for financing projects, etc. and making appropriations. On the House Voting Schedule.

HB 1614 (Belfanti)-Amends the Fiscal Code. On agenda for Senate Appropriations Committee on 9/30.

II. State-Related Institution Budget Legislation

HB 1708 (D. Evans)-Appropriates \$318,073,000 (state) and \$20,302,000 (Federal ARRA) to The Pennsylvania State University. The State funding portion represents the amount Penn State received after the Governor's six percent reduction in the original 2008-09 budget. The ARRA funds restore the total to the original 2008-09 level.

SB 1040 (Corman)-Appropriates \$304,450,000 (state) and \$15,482,999 (Federal ARRA) to The Pennsylvania State University. Recommended to the Senate Appropriations Committee.

HB 1709 (D. Evans)-Appropriates \$13,623,000 (state) and \$870,000 (Federal ARRA) to Lincoln University. On the House Voting Schedule.

SB 1038 (Corman)-Appropriates \$13,623,000 (state) and \$163,000 (Federal ARRA) to Lincoln University. Recommended to the Senate Appropriations Committee.

HB 1710 (D. Evans)-Appropriates \$164,974,000 (state) and \$10,530,000 (Federal ARRA) to Temple University. On the House Voting Schedule.

SB 1037 (Corman)-Appropriates \$164,974,000 (state) and \$7,943,000 (Federal ARRA) to Temple University. Recommended to the Senate Appropriations Committee.

HB 1711 (D. Evans)-Appropriates \$160,490,000 (state) and \$10,244,000 (Federal ARRA) to the University of Pittsburgh. On the House Voting Schedule.

SB 1036 (Corman)-Appropriates \$160,490,000 (state) and \$10,244,000 (Federal ARRA) to the University of Pittsburgh. Recommended to the Senate Appropriations Committee.

III. Transfer and Articulation

SB 1042 (Browne)-Amends the Fiscal Code. Omnibus companion bill to budget which includes Transfer and Articulation section.

SB 820 (Dinniman)-Amends the Public School Code, further providing for duties of public institutions of higher education, for the Transfer and Articulation Oversight Committee, and participation by independent and state-related institutions of higher education. Voted out of the Senate Education Committee. Re-referred to the Senate Appropriations Committee.

HB 11 (Roebuck) Amends the Public School Code to among other things provide for duties of public institutions of higher education, for Transfer and Articulation Oversight Committee and for participation by independent and state-related institutions of higher education. Amended and reported from House Education committee. Rereferred to House Appropriations Committee.

HB 1659 (Houghton)-Amends the Public School Code further providing for duties of public institutions of higher education, for Transfer and Articulation Oversight Committee and for participation by independent institutions of higher education and state-related institutions. On the House Voting Schedule.

IV. Tuition Relief/Control

HB 443 (Smith)-Act providing for a fixed tuition rate schedule by institutions of higher education for undergraduate students. Introduced and referred to committee on House Education.

HB 1317 (Santoni)-Video Lottery. Act providing for tuition relief and for a video lottery program; establishing penalties; and making appropriations. This bill contains the Governor's original tuition relief proposal. Was reported from the House Gaming Oversight Committee. Re-referred to the House Appropriations Committee.

HB 1339 (Goodman)-Amends Title 51 (Military affairs) providing a Tuition Refund Program for PA National Guard members; imposing duties on the DMVA and PHEAA; and making an appropriation. Introduced and referred to committee on House Veterans Affairs and Emergency Preparedness.

HB 1585 (Goodman)-Amends Title 51 (Military Affairs) providing for tuition refund under certain circumstances. Introduced and referred to Committee on House Veterans Affairs and Emergency Preparedness.

SB 78 (Greenleaf)-Amends the Police Officer, Firefighter, Corrections Employee and National Guard Member Child Beneficiary Act, extending benefits to surviving spouses, for act title, definitions, Postsecondary Education and General Assembly report. Introduced and referred to Senate Education Committee.

SB 653 (Piccola)-Act providing for tuition controls on Commonwealth colleges and universities and for duties of the Pennsylvania Higher Education Assistance Agency; making an appropriation; and making a related repeal. Introduced and referred to Senate Education Committee.

SB 881 (Piccola)-Act providing for the establishment of the Tuition Control Study Commission to study tuition controls on Commonwealth colleges and universities; and requiring the commission to issue a report of its findings to the General Assembly. Re-referred to Senate Appropriations.

V. Textbooks

SB 929 (Dinniman)-An Act providing for the sale of certain course materials at institutions of higher education, for responsibilities of faculty and for college textbook rental pilot programs. Establishing the College Textbook Policies Advisory Committee. Re-referred to the Senate Appropriations Committee.

VI. Bonuses and Salary Information

SB 103 (Eichelberger) An Act providing for banning bonuses provided to employees of Commonwealth agencies. Referred to the Senate State Government Committee.

SB 107 (Pileggi)-An Act requiring the posting of certain governmental salary information on the Internet. Tabled in the Senate.

HB 355 (Roae)-An Act providing for banning bonuses provided to employees of Commonwealth agencies. Referred to the House State Government Committee.

VII. Alcohol Liability

SB 488 (Rafferty)-Amends Title 18 (Crimes & Offenses) in provisions relating to minors, further providing for the offense of purchase, consumption, possession or transportation of liquor or malt or brewed beverages. On the House Voting Schedule.

Advancement Committee Meeting
October 7, 2009

SUBJECT: Budget Update (INFORMATION)

UNIVERSITIES AFFECTED: All

BACKGROUND: An update on the budget and efforts to secure PASSHE's appropriations request will be provided.

Supporting Documents Included: N/A

Other Supporting Documents Available: N/A

Reviewed by: N/A

Prepared by: Karen S. Ball

Telephone: (717) 720-4053



Pennsylvania State System of Higher Education

Finance, Administration, and Facilities Committee Meeting

Boardroom, First Floor
Administration Building
Dixon University Center
2986 North Second Street
Harrisburg, PA 17110-1201

October 7, 2009

Agenda

<u>Item</u>	<u>Page</u>
1. Operating Budget Update (INFORMATION)	23
2. Fiscal Year 2009/10 Educational and General Appropriation Allocation (ACTION).....	24
3. Fiscal Year 2009/10 Program Initiatives Line Item Allocation (ACTION).....	27
4. Series AK Bond Sale Results (INFORMATION)	29
5. Official Residence Renovation, Edinboro University of Pennsylvania (INFORMATION)	30



Committee Members: C.R. “Chuck” Pennoni (*Chair*), John M. Brinjac (designee for Governor Edward Rendell), Donna Cooper (designee for Secretary Gerald L. Zahorchak), Representative Michael K. Hanna, Senator Vincent J. Hughes, Guido M. Pichini, Harold C. Shields, and Kenneth M. Jarin (*ex officio*)

For further information, contact Peter H. Garland at (717) 720-4010.

Finance, Administration, and Facilities Committee Meeting
October 7, 2009

SUBJECT: Operating Budget Update (INFORMATION)

UNIVERSITIES AFFECTED: All

BACKGROUND: Typically, at its October meeting, the Board of Governors reviews PASSHE's current budget (fiscal year 2009/10) and acts on the appropriations request for the upcoming year (fiscal year 2010/11). At the time of this mailing, the Commonwealth has not yet finalized its fiscal year 2009/10 budget. If the Commonwealth's fiscal year 2009/10 budget has been enacted, PASSHE's operating budget will be discussed at the Board meeting.

Supporting Documents Included: N/A

Other Supporting Documents Available: N/A

Reviewed by: Council of Presidents, September 9, 2009

Prepared by: James S. Dillon

Telephone: (717) 720-4100

Finance, Administration, and Facilities Committee Meeting October 7, 2009

SUBJECT: Fiscal Year 2009/10 Educational and General Appropriation Allocation (ACTION)

UNIVERSITIES AFFECTED: All

BACKGROUND: This item is to be considered if the Commonwealth's fiscal year 2009/10 budget has been enacted.

Board of Governors' Policy 1984-06-A: *Allocation Formula*, specifies the method by which the Educational and General (E&G) appropriation is allocated annually to the Universities for their basic funding requirements. To determine the amount of the fiscal year 2009/10 E&G appropriation that is to be distributed to the Universities through the allocation formula, certain items of System-wide significance must first be funded. These items and their recommended fiscal year 2009/10 funding levels are described in Attachment 1.

MOTION: That the Board of Governors approve the following allocation of funds from PASSHE's fiscal year 2009/10 E&G appropriation.

Item	Amount
Office of Internal Audit and Risk Assessment	\$500,000
APSCUF Professional Development Fund	\$150,000
APSCUF New Tenure-Track Faculty Professional Development Fund	\$50,000
SCUPA Professional Development Fund	\$10,000
Dixon University Center Academic Programs	\$1,400,000
System Reserve	\$662,860
McKeever Environmental Learning Center	\$368,332

Supporting Documents Included: Funding of System-Wide Initiatives from the Fiscal Year 2009/10 E&G Appropriation (Attachment 1); Report of Expenditures from the System Reserve (Attachment 2)

Other Supporting Documents Available: Fiscal Year 2009/10 Appropriations Request; October 22-23, 2008, meeting materials; February 4, 2009, conference call materials; Commonwealth's 2009/10 Budget, if enacted; Board of Governors' Policy 1984-06-A: *Allocation Formula*

Reviewed by: Council of Presidents, June 10, 2009

Prepared by: James S. Dillon

Telephone: (717) 720-4100

**Pennsylvania State System of Higher Education
Funding of System-Wide Initiatives from the Fiscal Year 2009/10 E&G Appropriation**

Office of Internal Audit and Risk Assessment—Formerly named the Internal Review Group, the functions performed in this office have been funded through Consolidated University Operations (CUO) payments. At its July 2009 meeting, the Board approved an expansion of PASSHE’s internal audit function to provide a cohesive organizational structure responsible for facilitating risk assessment activities and, in turn, structuring an internal audit plan based on high risk areas. Outcomes will provide stronger reporting of risk factors and internal control weaknesses, with their potential impact on operations, to the Audit Committee of the Board of Governors, Chancellor, University Presidents, and University Councils of Trustees. In fiscal year 2009/10, the total appropriation recommended to begin expansion of this office is \$500,000.

Professional Development Funds—The collective bargaining agreement with the Association of Pennsylvania State College and University Faculties (APSCUF) continued the Faculty Professional Development Program with a fiscal year 2009/10 funding requirement of \$150,000 for current faculty members and \$50,000 for probationary faculty members. The collective bargaining agreement between PASSHE and the State College and University Professional Association (SCUPA) requires \$85,000 for its professional development program. In fiscal year 2005/06, during negotiations for the previous SCUPA contract, \$75,000 was set aside in good faith to fund this development program. As part of the final contract, no funding was required for that year; therefore, the money is now available for use. It will be added to the \$10,000 that is being set aside in the 2009/10 budget to create the \$85,000 pool that is needed.

Dixon University Center Academic Programs—The academic programming performed at the Dixon University Center has been funded partially through the E&G appropriation for many years. The total appropriation recommended for continuation of these academic services and associated maintenance of the Dixon University Center site is \$1,400,000. This represents level funding for these activities since fiscal year 2005/06.

Replenishment of the System Reserve—The total recommended allocation to the System Reserve for fiscal year 2009/10 is \$662,860, which will replenish the System Reserve to the \$1,500,000 level required by Board of Governors’ Policy 1984-07-A: *System Reserve Allocation and Expenditure Criteria*. Attachment 2 is a detailed list of expenditures for fiscal year 2008/09 and a list of projected expenditures for fiscal year 2009/10. The amount to be replenished is less than the total expenditures, due to interest earnings.

McKeever Environmental Learning Center—An allocation of \$368,332 is recommended for operation of the McKeever Environmental Learning Center by Slippery Rock University of Pennsylvania. This funding level augments its line item appropriation and represents level funding in McKeever’s share of the E&G appropriation.

**Pennsylvania State System of Higher Education
Report of Expenditures from the System Reserve**

Actual 2008/09 Expenditures

Presidential Search (West Chester)	\$1,839
California Property Appraisal	3,950
Clarion Property Appraisal	4,200
Cheyney 2000 (expended balance of previously designated funds)	19,987
Official Residence Renovation (West Chester)	613,860
System Financial Audit (Fiscal Year 2007/08)	<u>74,814</u>
Total Fiscal Year 2008/09 Expenditures	\$718,650

Anticipated 2009/10 Expenditures

System Financial Audit (Fiscal Year 2008/09)	\$77,500
Official Residence Renovation (West Chester)	<u>30,000</u>
Total Anticipated Fiscal Year 2009/10 Expenditures	\$107,500

Finance, Administration, and Facilities Committee Meeting October 7, 2009

SUBJECT: Fiscal Year 2009/10 Program Initiatives Line Item Allocation (ACTION)

UNIVERSITIES AFFECTED: All

BACKGROUND: This item is to be considered if the Commonwealth's 2009/10 budget has been enacted. If enacted, a revised document will be provided at the meeting.

At its October 2008 meeting, the Board of Governors approved line item requests, including a \$22,538,000 line item for Program Initiatives. The Commonwealth budget appropriated \$XX,XXX,XXX for this line item. The Program Initiatives line item components are summarized below, reflecting the amount allocated by the Board to each of these initiatives in 2008/09, and both the requested and recommended amounts for 2009/10.

	2008/09 Allocation	2009/10 Initial Request	2009/10 Recommendation
Performance Funding	\$9,970,000	\$10,538,000	To Be Determined
Information Technology	\$5,000,000	\$5,000,000	To Be Determined
Workforce and Economic Development	\$1,868,000	\$5,000,000	To Be Determined
Educator Excellence	\$1,210,000	\$2,000,000	To Be Determined
Cheyney Revitalization	\$500,000	\$0	To Be Determined

The attachment provides an explanation of each of these items.

MOTION: That the Board of Governors approve the attached allocation of funds from PASSHE's fiscal year 2009/10 Program Initiatives line item.

Supporting Documents Included: Allocation of the Fiscal Year 2009/10 Program Initiatives Line Item

Other Supporting Documents Available: Fiscal Year 2009/10 Appropriations Request; October 15–16, 2008, meeting materials; February 4, 2009, conference call materials; Commonwealth's 2009/10 Budget, if enacted

Reviewed by: Council of Presidents, June 10, 2009

Prepared by: James S. Dillon

Telephone: (717) 720-4100

**Pennsylvania State System of Higher Education
Allocation of the Fiscal Year 2009/10 Program Initiatives Line Item**

Performance Funding.....To Be Determined

The Board of Governors has recognized performance at PASSHE Universities for the last seven years through the Performance Funding Program. In 2008/09, the program was funded with \$30.0 million from the E&G appropriation and \$10.0 million from the Program Initiatives line item, for a total of \$40.0 million, equivalent to 8% of the E&G appropriation. At its October 2008 meeting, the Board of Governors approved continuing performance funding in this same manner for 2009/10, partially through the use of this line item.

Information TechnologyTo Be Determined

PASSHE continues to enhance the System-wide integrated administrative system that is used to maximize efficiency of administrative processing (i.e., procurement, budget, accounting, human resources management, and payroll) and to support decision support requirements at all 14 Universities and the Office of the Chancellor. The resulting data from administrative processes are used with a robust data warehouse system for PASSHE and University reporting and data analysis. Continued funding for this project is necessary to support implementation of additional functionality, upgrades to the administrative application and required hardware, and disaster recovery.

Workforce and Economic Development.....To Be Determined

PASSHE Universities are key partners for state and regional economic development. Their mission-based contribution to workforce and economic development is increasing human capital for tangible productivity and income benefits, creating intellectual wealth for commercialization potential. Continuation of funding for workforce and economic development initiatives will enhance PASSHE's partnerships with state and local communities to increase workforce and economic development throughout the regions of the Commonwealth. Funding will continue to support the expansion of student internships and the development of Entrepreneurial Leadership Centers and university business infrastructure.

Educator Excellence.....To Be Determined

The Educator Excellence component of the Program Initiatives line item will continue efforts to improve the quality of school administrators and teachers at all levels with particular emphasis on (1) enhancing the quality of preparation for PK-8 educators, (2) improving preparation of education students for certification tests, (3) increasing the number of qualified teachers and other professionals for high need school districts, (4) increasing the number and quality of science and mathematics teachers, (5) enhancing the skills of current teachers and administrators through professional development, and (6) increasing the diversity of the teacher workforce.

Cheyney Revitalization.....To Be Determined

Funding is sought to assist in Cheyney University of Pennsylvania's revitalization efforts in various areas that will, in turn, increase the enrollment at the University and continue the rich legacy that has been created there.

Finance, Administration, and Facilities Committee Meeting October 7, 2009

SUBJECT: Series AK Bond Sale Results (INFORMATION)

UNIVERSITIES AFFECTED: All

BACKGROUND: At its April 2009 meeting, the Board of Governors authorized the sale of tax-exempt bonds during fiscal year 2009/10 to refund previous System bond issues. The System issued its 2009 Series AK bonds on a fixed-rate basis on September 3, 2009, refunding Series R and Series S. The issue was not insured and carries an Aa3 underlying System credit rating by Moody's Investors Service, Inc., and an AA- by Fitch IBCA, Inc. The fixed-rate Series AK bonds were competitively bid, receiving an all-in-true interest cost of 3.25%. There were 11 bidders, and the net present value savings to the System for the Series AK refunding bonds is \$4.8 million, or 10.12% of the refunded bonds. Each University's participation in the savings depends on its share of the debt that was refunded. The serial interest rate yields for the Series AK bonds follow:

2010	0.70%	2016	2.62%
2011	1.07%	2017	2.90%
2012	1.45%	2018	3.12%
2013	1.74%	2019	3.30%
2014	2.10%	2020	3.50%
2015	2.35%	2024	4.00%

Supporting Documents Included: N/A

Other Supporting Documents Available: Financial Advisor's Final Numbers Book

Reviewed by: N/A

Prepared by: James S. Dillon

Telephone: (717) 720-4100

Finance, Administration, and Facilities Committee Meeting
October 7, 2009

SUBJECT: Official Residence Renovation, Edinboro University of Pennsylvania
(INFORMATION)

UNIVERSITIES AFFECTED: Edinboro University of Pennsylvania

BACKGROUND: The official residence at Edinboro University is in need of renovation, and the University is seeking a System Reserve allocation to fund the project. The official residence is a 7,800-square-foot home constructed in 1885. The last significant renovation of the residence was a kitchen remodel in the late 1980s.

The primary goal of the proposed renovation is to provide ADA accessibility to the first floor of the residence. This includes an entrance with a ramp, accessible doorways, and rest room facilities. The project will also update finishes, provide some hazardous material abatement, replace the roof, repair or replace windows, and make other minor repairs. The estimated cost of these repairs is not expected to exceed \$650,000.

Board of Governors' Policy 1984-07A: *System Reserve Allocation and Expenditure Criteria*, permits expenditures from the System Reserve for life cycle renovation of official residences with the Chancellor's approval after presentation to and consultation with the Board.

Supporting Documents Included: N/A

Other Supporting Documents Available: Edinboro Official Residence Preliminary Project Planning Information

Reviewed by: N/A

Prepared by: James S. Dillon

Telephone: (717) 720-4100



Pennsylvania State System of Higher Education

Human Resources Committee Meeting

Boardroom, First Floor
Administration Building
Dixon University Center
2986 North Second Street
Harrisburg, PA 17110-1201

Wednesday, October 7, 2009

Agenda

<u>Item</u>	<u>Page</u>
Review of Board of Governors' Policy 2002-03: <i>Evaluating Presidents</i> (INFORMATION)	32



Committee Members: Marie Conley Lammando (*Chair*), Paul S. Dlugolecki, Harold C. Shields, Aaron A. Walton and Kenneth M. Jarin (*ex officio*).

For further information, contact Peter H. Garland at (717) 720-4010.

Human Resources Committee Meeting October 7, 2009

SUBJECT: Review of Board of Governors' Policy 2002-03, *Evaluating Presidents*
(INFORMATION)

UNIVERSITIES AFFECTED: All

BACKGROUND: Critical to the success of universities is the quality of leadership. Each year, expectations for university presidents grow. As chief executives of complex organizations, the dimensions of leadership on which presidents must be evaluated continue to evolve. As a result, the Human Resources Committee is undertaking a review of Board of Governors' Policy 2002-03, *Evaluating Presidents*, and current practice, to ensure that the process is clear to all parties; that expectations and evaluation criteria are developed in conjunction with the university trustees; and that national best practices are followed. A report of activities will be provided at the Board meeting.

Supporting Documents Included: N/A

Other Supporting Documents Available: Board of Governors' Policy 2002-03, *Evaluating Presidents*

Reviewed by: N/A

Prepared by: Peter H. Garland

Telephone: (717) 720-4010



Pennsylvania State System of Higher Education

Information Technology Committee Meeting

Boardroom, First Floor
Administration Building
Dixon University Center
2986 North Second Street
Harrisburg, PA 17110-1201

Wednesday, October 7, 2009

Agenda

<u>Item</u>	<u>Page</u>
1. Information Technology Update (INFORMATION)	34
2. Board of Governors' Policy 2009-02: <i>Acceptable Use of Technology</i> (ACTION)	35



Committee Members: Paul S. Dlugolecki (*Chair*), John M. Brinjac (designee for Governor Edward Rendell), C.R. "Chuck" Pennoni and Kenneth M. Jarin (*ex officio*).

For further information, contact Peter H. Garland at (717) 720-4010.

Information Technology Committee Meeting
October 7, 2009

SUBJECT: Information Technology Update (INFORMATION)

UNIVERSITIES AFFECTED: All

BACKGROUND: An update on Information Technology will be provided.

Supporting Documents Included: N/A

Other Supporting Documents Available: N/A

Reviewed by: N/A

Prepared by: Arthur C. Stephens

Telephone: 717-720-4140

Information Technology Committee Meeting October 7, 2009

SUBJECT: Board of Governors' Policy 2009-02: *Acceptable Use of Technology* (ACTION)

UNIVERSITIES AFFECTED: All

BACKGROUND: The purpose of this policy is to address the use of technology resources issued/owned by universities and the Office of the Chancellor. Numerous information technology resources are provided to students, faculty, and staff, including but not limited to, all university computing equipment, personal data assistants, cellular phones, storage devices, and any electronic device issued by universities and the Office of the Chancellor as well as software, systems, and networks. These resources are provided to support System and university missions, goals, and purposes. All users of the resources are expected to act responsibly and to follow the university's policies and any applicable local, state and federal laws (e.g. copyright, criminal use of a communication device, harassment, etc.) related to the use of these resources. This policy applies to all users including faculty, staff, students, contractors and guest users of the computer network resources, equipment, or connecting resources. Use of the information technology resources signifies agreement to comply with this policy.

While the role of privacy in higher education is respected, and every attempt will be made to honor that ideal, there is no expectation of privacy of information stored on or sent through university-owned information technology, except as required by state or federal law. For example, a university may be required to provide information stored in its information technology resources to someone other than the user as a result of court order, investigatory process, or in response to a request authorized under Pennsylvania's Right-to-Know statute (65 P.S. §67.101 et seq.). Information stored by the University may also be viewed by technical staff working to resolve technical issues.

MOTION: That the Board of Governors approve Policy 2009-02: *Acceptable Use of Technology*.

Supporting Documents Included: Board of Governors' Policy 2009-02: *Acceptable Use of Technology*

Other Supporting Documents Available: Sample University Acceptable Use of Technology Policy

Reviewed by: Council of Presidents on June 10, 2009

Prepared by: Arthur C. Stephens

Telephone: 717-720-4140



PA State System of Higher Education Board of Governors

Effective: October 8, 2009

Page 1 of 2

POLICY 2009-02: ACCEPTABLE USE OF TECHNOLOGY

See Also:

Adopted: October 8, 2009

Amended:

A. Purpose:

To require acceptable use of technology policies for all persons or entities who have access to the technological resources of the Pennsylvania State System of Higher Education (PASSHE). Nothing herein is intended to contradict or conflict with applicable federal and state laws or regulations.

B. Acceptable Use Policy Defined

An acceptable use of technology policy defines the capabilities and limitations of the use of information technology resources to ensure that these resources are available to all approved users and that the use of technology complies with state and federal laws.

Information technology resources include, but are not limited to, all PASSHE/University owned or operated hardware, software, computing equipment, systems, networks, programs, personal data assistants, cellular phones, fax, telephone, storage devices, cable television, input/output, connecting devices via either a physical or wireless connection regardless of the ownership of the device connected to the network, and any electronic device issued by the System or a university.

C. Responsibility for Administration

1. An acceptable use of technology policy defines the capabilities and limitations of the use of technological resources to ensure that these resources are available to all approved users and that the use of technology complies with state and federal laws and ensures its consistent application. The assessment is to be done in conjunction with legal counsel.

2. Each President and the Chancellor shall develop protocols to ensure that all users of information technology understand and agree to the acceptable use of technology policies before access to PASSHE/University resources is permitted.
- D. All Acceptable Use policies must include the following language (as appropriate):
1. While PASSHE/University recognizes the role of privacy in institutions of higher learning and will endeavor to honor that ideal, there is no expectation of privacy of information stored on or sent through PASSHE/University-owned IT resources, except as required by law.
 2. Use of the IT resources is a privilege and signifies agreement to comply with this policy. Users are expected to act responsibly and follow the policies and any applicable laws related to the use of IT resources.



Pennsylvania State System of Higher Education

Executive Committee Meeting

Boardroom, First Floor
Administration Building
Dixon University Center
2986 North Second Street
Harrisburg, PA 17110-1201

Wednesday, October 7, 2009

Agenda

<u>Item</u>	<u>Page</u>
1. H1N1 Emergency Preparedness (INFORMATION)	39
2. Board of Governors' Policy: 2009-03: <i>Social Equity</i> (ACTION).....	40



Committee Members: Kenneth M. Jarin (*Chair*), Marie Conley Lammando, Paul S. Dlugolecki, C.R. "Chuck" Pennoni, Guido M. Pichini, Thomas M. "Doc" Sweitzer and Aaron A. Walton.

For further information, contact Peter H. Garland at (717) 720-4010.

Executive Committee Meeting
October 7, 2009

SUBJECT: H1N1 Emergency Preparedness (INFORMATION)

UNIVERSITIES AFFECTED: All

BACKGROUND: The current status of preparation to deal with the H1N1 flu will be provided at the Board meeting.

Supporting Documents Included: N/A

Other Supporting Documents Available: N/A

Reviewed by: N/A

Prepared by: Arthur C. Stephens

Telephone: 717-720-4140

Executive Committee Meeting
October 7, 2009

SUBJECT: Board of Governors' Policy 2009-03: *Social Equity* (ACTION)

UNIVERSITIES AFFECTED: All

BACKGROUND: The Pennsylvania State System of Higher Education (PASSHE) is committed to creating and maintaining an academic and work environment that is free of unlawful harassment, sexual harassment and discrimination, and will not knowingly tolerate substantiated incidences.

To ensure this commitment System-wide, the proposed policy addresses basic social equity practices and standards that should be incorporated within social equity policies promulgated at the university level.

MOTION: That the Board of Governors approve Policy 2009-03: *Social Equity*.

Supporting Documents Included: Board of Governors' Policy 2009-03: *Social Equity*

Other Supporting Documents Available: N/A

Reviewed by: N/A

Prepared by: Jacqueline Conforti Barnett

Telephone: 717-720-4016



PA State System of Higher Education Board of Governors

Effective: October 8, 2009

Page X of X

POLICY 2009-03: SOCIAL EQUITY

See Also:

Adopted: October 8, 2009

Amended:

A. Purpose

The Pennsylvania State System of Higher Education (PASSHE) is committed to creating and maintaining an academic and work environment that is free of unlawful harassment, sexual harassment and discrimination and will not knowingly tolerate substantiated incidences.

B. Policy Standards

1. Within ninety days of the effective date of this policy, each University President and the Office of the Chancellor will issue or amend, if necessary, their harassment, sexual harassment and discrimination policies to comply with this policy. All policies must comply with federal and state laws or regulations. Policies must contain the following minimum requirements:
 - a. Definitions of harassment, sexual harassment and discrimination
 - b. Full contact information as to where all complaints may be filed
 - c. An obligation on the part of management and administration to report any allegations of unlawful harassment, sexual harassment or discrimination to the appropriate office
 - d. Both informal and formal mechanisms for resolving allegations
 - e. The ability for both the Complainant and the Respondent to be accompanied by advisors who are members of the campus community
 - f. Due process that is consistent with PASSHE's obligations within all collective bargaining agreements or the Board of Governors' Merit Principles Appeal Policy
 - g. Crisis counseling options for employees and students
 - h. Warnings against retaliatory actions and that retaliation is a separate cause of action for potential discipline in addition to the underlying allegation
 - i. Statement of risk in sexual harassment policies pertaining to relationships where there is a power or control dynamic (i.e. supervisor and supervisee; faculty and student)

- j. A mandatory obligation to conduct employee training yearly in addition to training for new students and employee orientations. All faculty, staff, and administrators are required to participate in this training within 60 days of commencing employment and at least every year thereafter. The method of training is at the discretion of each university
- k. An obligation to disseminate all social equity policies to employees and students in a manner that makes the information readily accessible. The method of distribution can include but not be limited to electronically, within employee and student handbooks, and/or via university website. A location where hard copies of all policies may be obtained on campus is also to be indicated.

C. Filing of Policies with the Office of Chancellor

A copy of each University's social equity policies shall be sent to the Office of the Chancellor within 90 days of the enactment of this policy and at any time thereafter when amendments are promulgated.



Pennsylvania State System of Higher Education

Board of Governors

Quarterly Meeting of the Board of Governors Pennsylvania State System of Higher Education

Boardroom, First Floor
Administration Building
Dixon University Center
2986 North Second Street
Harrisburg, PA 17110-1201

Thursday, October 8, 2009
8:30 a.m.

Agenda

Call to Order and Roll Call of the Members

Pledge of Allegiance

Approval of the Minutes of the July 15, 2009 Meeting and July 16, 2009 Meeting

Remarks of the Chair..... Chairman Kenneth M. Jarin

Report of the Chancellor..... Dr. John C. Cavanaugh

Public Comments

Committee Reports with Related Actions

- A. **Academic and Student Affairs**..... Mr. Aaron A. Walton
 1. PASSHE University Enrollments for Fall 2009
 2. Enrollments in Programs Approved in the Past Five Years by University
 3. The Washington Center for Internships and Academic Seminars Presentation
 4. Presentation on Clarion University of Pennsylvania – Venango Campus Partnerships
 5. Revisions to Venture Capital Loan Program

- B. **Advancement** Mr. Thomas M. "Doc" Sweitzer
 - 1. Governmental Relations Update
 - 2. Budget Update

- C. **Finance, Administration, and Facilities** Mr. C.R. "Chuck" Pennoni
 - 1. Operating Budget Update
 - 2. Fiscal Year 2009/10 Educational and General Appropriation Allocation
 - 3. Fiscal Year 2009/10 Program Initiatives Line Item Allocation
 - 4. Series AK Bond Sale Results
 - 5. Official Residence Renovation, Edinboro University of Pennsylvania

- D. **Human Resources** Ms. Marie Conley Lammando
 - Review of Board of Governors' Policy 2002-03, *Evaluating Presidents*

- E. **Information Technology** Mr. Paul S. Dlugolecki
 - 1. Information Technology Updates
 - 2. Board of Governors' Policy 2009-02: *Acceptable Use of Technology*

- F. **Executive** Chairman Kenneth M. Jarin
 - 1. H1N1 Emergency Preparedness
 - 2. Board of Governors' Policy 2009-03: *Social Equity*

Board Action Chairman Kenneth M. Jarin
 Resolution
 • Kathleen M. Shaw

Other Business..... Chairman Kenneth M. Jarin

Announcements

Adjournment



Board Members: Kenneth M. Jarin (*Chair*), Representative Matthew E. Baker, Nick J. Barcio, John M. Brinjac (designee for Governor Edward G. Rendell), Marie Conley Lammando, Donna Cooper (designee for Secretary Gerald L. Zahorchak), Paul S. Dlugolecki, Representative Michael K. Hanna, Senator Vincent J. Hughes, Richard Kneedler, Jamie L. Lutz, Joseph F. McGinn, C.R. "Chuck" Pennoni (*Vice Chair*), Senator Jeffrey E. Piccola, Guido M. Pichini, Governor Edward G. Rendell, Harold C. Shields, Thomas M. "Doc" Sweitzer, Christine J. Toretti, Aaron A. Walton (*Vice Chair*) and Secretary Gerald L. Zahorchak

For further information, contact Peter H. Garland at (717) 720-4010.

**Board of Governors
of the
Pennsylvania State System of Higher Education**

Meeting Minutes

144th Meeting
Wednesday, July 15, 2009
Boardroom, First Floor
Administration Building
2986 North Second Street
Harrisburg, PA 17110-1201

1:30 p.m.

ATTENDING

Board of Governors:

Mr. John M. Brinjac (designee for Governor Edward G. Rendell)
Ms. Marie Conley Lammando
Ms. Donna Cooper (designee for Secretary Zahorchak)
Mr. Paul S. Dlugolecki
Representative Michael K. Hanna
Mr. Kenneth M. Jarin (*Chair*)
Mr. Ryan Jerico
Dr. Richard Kneedler
Mr. Joseph F. McGinn
Mr. C. R. "Chuck" Pennoni
Mr. Guido M. Pichini
Mr. Aaron M. Shenck (designee for Senator Piccola)
Mr. Harold C. Shields
Mr. Thomas M. Sweitzer
Ms. Christine J. Toretta
Mr. Aaron A. Walton

Representative Matthew E. Baker and Senator Vincent J. Hughes were absent.

Office of the Chancellor:

Dr. John C. Cavanaugh (*Chancellor*)
Ms. Karen S. Ball
Ms. Jacqueline Conforti Barnett
Mr. Gary K. Dent
Mr. James S. Dillon
Dr. Peter H. Garland
Dr. James D. Moran
Mr. Leo Pandeladis
Mr. Arthur C. Stephens

Also in attendance for participation or in support of Committee and Board activities from the Office of the Chancellor: Ira K. Blake, Ginger S. Coleman, Steven R. Dupes, Rita C. Frealing-Shultz, Audrey J. Guistwhite, Diane Haas, Kathleen M. Howley, Lois M. Johnson, Kimberly E. Knasko, Kenneth D. Marshall, Michael A. Mottola, Georgia K. Prell, Carol A. Risaliti, Dianne T. Scaff and Dean A. Weber.

University Presidents in attendance: Angelo Armenti, Jr., Tony Atwater, Jeremy D. Brown, F. Javier Cevallos, Robert J. Dillman, Joseph P. Grunenwald, Michelle R. Howard-Vital, Maravene S. Loeschke, Francine G. McNairy, Keith T. Miller, William N. Ruud, Robert M. Smith, David L. Soltz and Greg R. Weisenstein.

Chairman Jarin called the meeting to order at 1:45 pm.

Attendance taken at the direction of the Chairman established that a quorum of the Board was present.

BOARD ACTION

Chairman Jarin noted that the Board had one action item to recommend to the Board for approval.

Chairman Jarin moved **THAT THE BOARD OF GOVERNORS APPROVE THE STANDING COMMITTEE ASSIGNMENTS AS SHOWN IN THE STANDING COMMITTEE ASSIGNMENTS DOCUMENT DISTRIBUTED AT THE QUARTERLY BOARD MEETING, EFFECTIVE JULY 15, 2009. (Attachment #1)**

The motion passed unanimously.

ADJOURNMENT

Chairman adjourned the meeting at 1:55 pm.

Committees of the Board convened.

The Board went into Executive Session at 5:15 pm.

ATTEST:

Peter H. Garland
Secretary to the Board



STANDING COMMITTEE ASSIGNMENTS

Academic and Student Affairs

Walton, Aaron A. (*Chair*)
 Baker, Representative Matthew E.
 Cooper, Donna (*Designee for Secretary Gerald L. Zahorchak*).
 Kneedler, Richard
 Piccola, Senator Jeffrey E.
 Zahorchak, Secretary Gerald L.
 Jarin, Kenneth M. (*ex officio*)

Advancement

Sweitzer, Thomas M. "*Doc*" (*Chair*)
 Conley Lammando, Marie
 Hughes, Senator Vincent J.
 Jerico, Ryan R.
 McGinn, Joseph F.
 Jarin, Kenneth M. (*ex officio*)

Audit

Pichini, Guido M. (*Chair*)
 Dlugolecki, Paul S.
 Kneedler, Richard
 Pennoni, C.R. "Chuck"
 Toretti, Christine
 Jarin, Kenneth M. (*ex officio*)

Executive

Jarin, Kenneth M. (*Chair*)
 Conley Lammando, Marie
 Dlugolecki, Paul S.
 Pennoni, C.R. "Chuck"
 Pichini, Guido M.
 Sweitzer, Thomas M. "*Doc*"
 Walton, Aaron A.

Finance, Administration, and Facilities

Pennoni, C.R. "Chuck" (*Chair*)
 Brinjac, John M. (*Designee for Gov. Edward Rendell*)
 Cooper, Donna (*Designee for Secretary Gerald L. Zahorchak*)
 Hanna, Representative Michael K.
 Hughes, Senator Vincent J.
 Pichini, Guido M.
 Shields, Harold C.
 Jarin, Kenneth M. (*ex officio*)

Human Resources

Conley Lammando, Marie (*Chair*)
 Dlugolecki, Paul S.
 Shields, Harold C.
 Walton, Aaron A.
 Jarin, Kenneth M. (*ex officio*)

Information Technology

Dlugolecki, Paul S. (*Chair*)
 Brinjac, John M. (*Designee for Gov. Edward Rendell*)
 Pennoni, C.R. "Chuck"
 Jarin, Kenneth M. (*ex officio*)

Updated: July 15, 2009

**Board of Governors
of the
Pennsylvania State System of Higher Education**

Meeting Minutes

145th Meeting
Thursday, July 16, 2009
Boardroom, First Floor
Administration Building
2986 North Second Street
Harrisburg, PA 17110-1201

9:30 a.m.

ATTENDING

Board of Governors:

Mr. John M. Brinjac (designee for Governor Edward G. Rendell)
Ms. Marie Conley Lammando
Ms. Donna Cooper (designee for Secretary Zahorchak)
Mr. Paul S. Dlugolecki
Representative Michael K. Hanna
Senator Vincent J. Hughes (via conference call)
Mr. Kenneth M. Jarin (*Chair*)
Mr. Ryan Jerico
Dr. Richard Kneedler
Mr. Joseph F. McGinn
Mr. C. R. "Chuck" Pennoni
Mr. Guido M. Pichini
Mr. Aaron M. Shenck (designee for Senator Piccola)
Mr. Harold C. Shields (via conference call)
Mr. Thomas M. Sweitzer
Ms. Christine J. Toretta
Mr. Aaron A. Walton

Representative Matthew E. Baker was absent.

Office of the Chancellor:

Dr. John C. Cavanaugh (Chancellor)
Ms. Karen S. Ball
Ms. Jacqueline Conforti Barnett
Mr. Gary K. Dent
Mr. James S. Dillon
Dr. Peter H. Garland
Dr. James D. Moran
Mr. Leo Pandeladis
Mr. Arthur C. Stephens

Also in attendance for participation or in support of Committee and Board activities from the Office of the Chancellor: Ginger S. Coleman, Steven R. Dupes, Rita C. Frealing-Shultz, Audrey J. Guistwhite, Diane Haas, Kathleen M. Howley, Lois M. Johnson, Kenneth D. Marshall, Michael A. Mottola, Georgia K. Prell, Dianne T. Scaff and Dean A. Weber.

University Presidents in attendance: Angelo Armenti, Jr., Tony Atwater, Jeremy D. Brown, F. Javier Cevallos, Robert J. Dillman, Joseph P. Grunenwald, Michelle R. Howard-Vital, Maravene S. Loeschke, Francine G. McNairy, Keith T. Miller, William N. Ruud, Robert M. Smith, David L. Soltz and Greg R. Weisenstein.

Chairman Jarin called the meeting to order at 9:15 a.m.

Attendance taken at the direction of the Chairman established that a quorum of the Board was present.

The Pledge of Allegiance was recited by those in attendance.

APPROVAL OF THE MINUTES OF THE APRIL 2, 2009 MEETING

Chairman Jarin noted that the minutes of the **APRIL 2, 2009** meeting were distributed prior to the meeting. The Chairman moved **THAT THE MINUTES OF THE APRIL 2, 2009 MEETING BE APPROVED.**

The motion passed unanimously.

REMARKS OF THE CHAIR

Chairman Jarin acknowledged the four new Board members and read each of their bios.

- Dr. Richard Kneedler
- Mr. Joseph F. McGinn
- Mr. Harold C. Shields
- Mr. Thomas M. Sweitzer

Chairman Jarin introduced the new Vice Chancellor for Human Resources and Labor Relations, Mr. Gary K. Dent and Mr. Aaron M. Shenck (designee for Senator Piccola).

Chairman Jarin noted this would be Ryan Jerico's, student Board member, last Board meeting. Ryan will graduate in August 2009.

Chairman Jarin stated the budget was not passed yet.

Chairman Jarin called on Chancellor John Cavanaugh for his report.

REPORT OF THE CHANCELLOR

Chancellor Cavanaugh welcomed those in attendance.

Chancellor Cavanaugh introduced the four new Board members, Dr. Richard Kneedler, Mr. Joseph F. McGinn, Mr. Harold C. Shields, Mr. Thomas M. Sweitzer, the new Vice Chancellor for Human Resources and Labor Relations, Mr. Gary K. Dent and Mr. Aaron M. Shenck (designee for Senator Piccola).

Chancellor Cavanaugh mentioned his report to the Board is sent via e-mail. (Attachment #1) The report includes highlights of university accomplishments and other noteworthy activities, fundraising grants and other awards, university and community partnerships, student and faculty recognition and winter sports championships.

PUBLIC COMMENTS

Dr. Stephen Hicks, President of APSCUF, addressed the Board on maintaining a strong system and the need for a tuition increase.

Mr. Marc Kornfeld, UniServ Representative for SCUPA, addressed the Board. He indicated there are more students at the universities with less help. He suggested the tuition be set at a level the universities can work with.

Mr. Kenneth Miller, Pittsburgh Anti Sweatshop Community Alliance, addressed the Board. The members of the Pittsburgh Anti Sweatshop Community Alliance recommend that the Board take the following actions:

- Mandate that all PASSHE universities suspend collegiate licensing with Russell Athletic. Russell Athletic failed to remediate sweatshop working conditions at a Honduran factory and subsequently closed the facility, the lease constructive response to Workers Rights Consortium (WCR) recommendations.
- Mandate that the universities join the Workers Rights Consortium (WCR) and coordinate their responses to WCR investigations, a step that significantly complements your Executive Order.

Mr. Frank DeStefano, President of SCUPA, addressed the Board. He spoke about the conditions on the university campuses. He noted positions are being eliminated and personnel are not being hired; therefore, making it difficult for the universities.

Mr. Marc Kornfeld, UniServ Representative for SCUPA, addressed the Board. He indicated there are more students at the universities with less help. He suggested the tuition be set at a level the universities can work with.

COMMITTEE REPORTS WITH RELATED ACTIONS

A. Academic and Student Affairs Committee

Mr. Walton presented the report on behalf of the Academic and Student Affairs Committee. The Committee reviewed one information item: Summary of Academic Program Actions for the 2008-09 Academic Year

Mr. Walton noted that the Committee had five action items to recommend to the Board for approval.

Mr. Walton moved **THAT THE BOARD OF GOVERNORS APPROVE THE MASTER OF SCIENCE IN NURSING DEGREE WITH A MAJOR IN NURSING ADMINISTRATION AND LEADERSHIP (ONLINE) AT CALIFORNIA UNIVERSITY OF PENNSYLVANIA. (Attachment #2)**

The motion passed unanimously.

Mr. Walton moved **THAT THE BOARD OF GOVERNORS APPROVE THE BACHELOR OF SCIENCE IN NURSING (BSN) DEGREE WITH A MAJOR IN NURSING (ONLINE) AT LOCK HAVEN UNIVERSITY OF PENNSYLVANIA. (Attachment #3)**

The motion passed unanimously.

Mr. Walton moved **THAT THE BOARD OF GOVERNORS APPROVE THE BACHELOR OF ARTS DEGREE WITH A MAJOR IN LIBERAL STUDIES AT CHEYNEY UNIVERSITY OF PENNSYLVANIA. (Attachment #4)**

The motion passed unanimously.

Mr. Walton moved **THAT THE BOARD OF GOVERNORS APPROVE THE MASTER OF SCIENCE DEGREE WITH A MAJOR IN INFORMATION SECURITY (ONLINE) AT EAST STROUDSBURG UNIVERSITY OF PENNSYLVANIA. (Attachment #5)**

The motion passed unanimously.

Mr. Walton moved **THAT THE BOARD OF GOVERNORS APPROVE CONTINUATION, THROUGH SPRING 2011, OF THE EXCEPTIONS FOR THE PROGRAMS LISTED ON THE ATTACHED DOCUMENT, *EXCEPTIONS TO THE 120-CREDIT REQUIREMENT*, DATED JULY 15, 2009. (Attachment #6)**

The motion passed unanimously.

B. Advancement Committee

Mr. Jarin presented the report on behalf of the Advancement Committee. The Committee reviewed two information items: Governmental Relations Update and Budget Update. Karen Ball provided recent legislative activity and an update on the Budget.

There were no action items to report.

C. Audit Committee

Mr. Pichini presented the report on behalf of the Audit Committee. The Committee reviewed one information item: the 2008-09 Annual Report – Internal Review Group.

Mr. Pichini noted that the Committee had four action items to recommend to the Board for approval.

Mr. Pichini moved **THAT THE BOARD OF GOVERNORS APPROVE THE CHANGES TO BOARD OF GOVERNORS POLICY 1991-06-A, STATE SYSTEM AUDIT POLICY. (Attachment #7)**

The motion passed unanimously.

Mr. Pichini moved **THAT THE BOARD OF GOVERNORS APPROVE THE OFFICE OF INTERNAL AUDIT AND RISK ASSESSMENT'S ANNUAL WORK PLAN FOR THE PERIOD JULY THROUGH DECEMBER 2009. (Attachment #8)**

The motion passed unanimously.

Mr. Pichini moved **THAT THE BOARD OF GOVERNORS APPROVE THE OFFICE OF INTERNAL AUDIT AND RISK ASSESSMENT'S FISCAL YEAR 2009-10 PROPOSED BUDGET AND STAFFING LEVEL. (Attachment #9)**

The motion passed unanimously.

Mr. Pichini Jarin moved **THAT THE BOARD OF GOVERNORS APPROVE THE APPOINTMENT OF DEAN A. WEBER TO THE POSITION OF DIRECTOR, OFFICE OF INTERNAL AUDIT AND RISK ASSESSMENT.**

The motion passed unanimously.

D. Finance, Administration, and Facilities Committee

Mr. Pennoni welcomed Mr. Harold C. Shields to the Finance Committee. Mr. Pennoni presented the report on behalf of the Finance, Administration, and Facilities Committee. The Committee reviewed three information items: Fiscal Year 2009/10 Operating Budget Update, Demolition of Ghering Health and Wellness Center, Edinboro University of Pennsylvania and the Demolition of Sanderson and Schmidt Halls, West Chester University of Pennsylvania.

Mr. Pennoni noted that the Committee had five action items to recommend to the Board for approval.

Mr. Pennoni moved **THAT THE BOARD OF GOVERNORS APPROVE:**

- 1. DELEGATE THE ALLOCATION OF FUNDS FOR THE INITIATIVES ON THE ATTACHED DOCUMENT FROM PASSHE'S FISCAL YEAR 2009/10 PROGRAM INITIATIVES LINE ITEM TO THE EXECUTIVE COMMITTEE OF THE BOARD OF GOVERNORS AFTER THE COMMONWEALTH'S BUDGET HAS BEEN FINALIZED; AND**
- 2. DELEGATE TO THE CHANCELLOR THE ABILITY TO MAKE ALLOCATION DECISIONS IN THE INTERIM TO MAINTAIN THE CONTINUITY OF PROGRAMS. (Attachment #10)**

The motion passed unanimously.

Mr. Pennoni moved **THAT THE BOARD OF GOVERNORS APPROVE:**

1. **DELEGATE THE ALLOCATION OF THE E&G APPROPRIATION TO THE EXECUTIVE COMMITTEE OF THE BOARD OF GOVERNORS AFTER THE COMMONWEALTH'S BUDGET HAS BEEN FINALIZED; AND**
2. **DELEGATE TO THE CHANCELLOR THE ABILITY TO MAKE ALLOCATION DECISIONS IN THE INTERIM TO MAINTAIN THE CONTINUITY OF OPERATIONS. (Attachment #11)**

The motion passed unanimously.

Mr. Pennoni moved **THAT THE BOARD OF GOVERNORS APPROVE THE FISCAL YEAR 2009/10 TUITION RATES IN ATTACHMENT 1 AND TECHNOLOGY TUITION FEE RATES IN ATTACHMENT 2. (Attachment #12)**

The motion passed unanimously.

Mr. Pennoni moved **THAT THE BOARD OF GOVERNORS APPROVE THE FISCAL YEAR 2009/10 CAPITAL SPENDING PLAN AND SUBMISSION OF THE LISTS OF PROJECTS FOR LEGISLATIVE AUTHORIZATION. (Attachment #13)**

The motion passed unanimously.

Mr. Pennoni moved **THAT THE BOARD OF GOVERNORS APPROVE CALIFORNIA UNIVERSITY'S ACQUISITION OF THE PROPERTY AT 750 ORCHARD STREET, CALIFORNIA, PENNSYLVANIA. (Attachment #14)**

The motion passed unanimously.

E. Human Resources

Ms. Conley Lammando presented the report on behalf of the Human Resources Committee. The Committee reviewed two information items: Social Equity-Human Resources Symposium (October 28-30, 2009) and Review of Board of Governors' Policy 2002-03, *Evaluating Presidents*.

There were no action items to report.

F. Information Technology

Mr. Paul Dlugolecki presented the report on behalf of the Information Technology Committee. The Committee reviewed one information item: Information Technology Update.

Mr. Dlugolecki noted that the Committee had one action item to recommend to the Board for approval.

Mr. Dlugolecki moved **THAT THE BOARD OF GOVERNORS DISCONTINUE THE SYTEC GOVERNANCE STRUCTURES APPROVED BY PREVIOUS BOARD ACTION BEGINNING WITH THE MARCH, 2001 BOARD MEETING.**

The motion passed unanimously.

G. Executive Committee

Chairman Jarin presented the report on behalf of the Executive Committee. Chairman Jarin noted that the Committee had one action item to recommend to the Board for approval.

Chairman Jarin moved **THAT THE BOARD OF GOVERNORS APPROVE THE MEETING DATES AND HOLD DATES AS INDICATED IN THE ATTACHED BOARD OF GOVERNORS' MEETING CALENDAR. (Attachment #15)**

The motion passed unanimously.

BOARD ACTION

Chairman Jarin noted that the Board had four action items to recommend to the Board for approval.

Mr. Walton reported on behalf of the Nominating Committee. The Committee recommended Board officers for 2009-2010: Mr. Kenneth Jarin, Chairman; Mr. C. R. "Chuck" Pennoni, Vice Chair; and Mr. Aaron A. Walton, Vice Chair.

Mr. Walton moved that the **BOARD OF GOVERNORS ACCEPT THE RECOMMENDATIONS OF THE NOMINATING COMMITTEE.**

The motion passed unanimously.

Chairman Jarin moved **THAT THE BOARD OF GOVERNORS APPROVE THE CONTRACT EXTENSION OF JOHN C. CAVANAUGH AS CHANCELLOR OF THE PENNSYLVANIA STATE SYSTEM OF HIGHER EDUCATION TO JUNE 30, 2012 AND AUTHORIZES THE CHAIRMAN TO EXECUTE THE NECESSARY DOCUMENTS.**

The motion passed unanimously.

Chairman Jarin recognized that Mr. Daniel P. Elby and Mr. Kim E. Lyttle were no longer members of the Board of Governors.

Representative Michael K. Hanna read into the record a resolution honoring the contributions of Daniel P. Elby. Chairman Jarin moved **THAT THE BOARD OF GOVERNORS APPROVE THE RESOLUTION (Attachment #16).**

The motion passed unanimously.

Ms. Marie Conley Lammando read into the record a resolution honoring the contributions of Kim E. Lyttle. Chairman Jarin moved **THAT THE BOARD OF GOVERNORS APPROVE THE RESOLUTION** (Attachment #17).

The motion passed unanimously.

ANNOUNCEMENT

Chairman Jarin announced the next quarterly Board of Governors' meeting is scheduled for October 7-8, 2009.

ADJOURNMENT

There being no further items of business to come before the Board, the Chairman adjourned the meeting at 11:00 am.

ATTEST:

Peter H. Garland
Secretary to the Board



**Highlights from the
Pennsylvania State System of Higher Education (PASSHE)
July 16, 2009**

***University Accomplishments
and Other Noteworthy Activities***

Bloomsburg University of Pennsylvania's newest student housing complex, which will open for the fall semester, has been named after President Emeritus Jessica S. Kozloff. The \$31 million complex built on the university's upper campus includes student apartments, a fitness center, meeting space and a mail room.

California University of Pennsylvania's College of Education and Human Services has received continuing accreditation from the National Council for Accreditation of Teacher Education (NCATE). Accreditation certifies that Cal U has met all of NCATE's performance-oriented standards, demonstrating that teacher candidates are knowledgeable about the subject matter they plan to teach and skilled at conveying that knowledge to students... A groundbreaking ceremony for the university's new convocation center will be held at 11 a.m., August 5. Local legislators, economic development officials and community leaders have been invited to participate in the event, which will mark the official beginning of the \$54 million project. The center will include a 6,000-seat arena, as well as state-of-the-art "smart" classrooms equipped for high-quality instruction and executive conferencing... Cal U. captured the 2008-09 Dixon Trophy, in recognition of the most successful all-around athletic program in the Pennsylvania State Athletic Conference. Cal U. won five conference championships during the academic year. **Shippensburg University of Pennsylvania** finished second in this year's standings and **Lock Haven and Slippery Rock Universities of Pennsylvania** tied for third. The trophy has been awarded every year since 1996 and is named for the late F. Eugene Dixon Jr., the founding chairman of the Pennsylvania State System of Higher Education.

Cheyney University of Pennsylvania President Michelle Howard-Vital has been selected to serve on the executive steering committee of the American Association of State Colleges and Universities' Millennium Leadership Initiative. MLI provides individuals traditionally underrepresented in the highest ranks of higher education the opportunity to develop skills, gain a philosophical overview and build the network needed to advance to the presidency. It

was conceived by AASCU's African-American presidents to help ensure the next generation of leaders in higher education reflects the diversity of the nation.

Clarion University of Pennsylvania was recognized as one of two "Universities of the Year" at the American Red Cross Greater Alleghenies Region's annual meeting. Individuals, businesses and organizations from 22 counties throughout the 100-county American Red Cross Blood Services, Greater Alleghenies Region, were honored at the event. Each year, Clarion University's fraternities and sororities sponsor several blood drives on campus.

East Stroudsburg University of Pennsylvania's computer security degree program has had its designation as a National Security Agency Center of Academic Excellence in Information Assurance Education renewed by the NSA and U.S. Department of Homeland Security. ESU is one of only 100 four-year institutions of higher education in the United States to hold this distinction. The computer security program also has been granted a six-year accreditation, which authorizes it to offer students three distinct certifications upon graduating with a Bachelor of Science degree in computer security... ESU's Division of Research and Economic Development (RED) recently hosted a "Topping-Off" ceremony for its new Center for Innovation and Entrepreneurship. The \$11.25 million, 51,000-square-foot center will be the home of RED, the ESU Business Accelerator and the ESU Wildlife and Forensic Lab in addition to innovative companies and anchor tenants in the areas of homeland security, life sciences/biotechnology, information technology, healthcare, advanced manufacturing and financial services. It is being built on 4.4 acres and anchors a new business park.

Edinboro University of Pennsylvania's online Master of Education program was cited in the May 2009 issue of *U.S. News & World Report* magazine for being among the nation's largest online graduate programs. The program, which has grown since its launching in 2001 with a 24-student cohort to now accommodate more than 700 students, ranks among the nation's top 20 providers of online graduate programs for professional educators. All of Edinboro University's master's degrees in education are nationally accredited by the National Council for Accreditation of Teacher Education (NCATE) and regionally accredited by the Middle States Association... Eighteen teachers from six Erie and Crawford county school districts are dedicating four weeks of their summer vacations to study the latest research and newest strategies to improve their students' writing and literacy skills as part of the PennLake National Writing Project being held at Edinboro University... Edinboro's wheelchair basketball team, "The Rolling Scots," recently visited Water Reed Army Medical Center to offer a clinic on the sport for wounded military veterans.

Indiana University of Pennsylvania President Tony Atwater was presented the Commander's Award for Public Service, one of the highest civilian service awards given by the U.S. Army at IUP's ROTC spring dining out event. The award is in recognition of Atwater's "outstanding dedication to the United States Armed Forces and generous support of the IUP Warrior Battalion." IUP has approximately 75 cadets officially enrolled in the ROTC program and another 200 students taking part in the health and wellness sections in the Military Science Department... IUP has broken ground on the final phase of its \$270 million "residential revival," among the largest projects of its kind in the nation. The construction of Crimson Suites, a 596-bed residential facility along Maple Street between Pratt Drive and Eleventh Street, is expected to be completed in fall 2010. The residential revival is a collaboration between IUP and the Foundation for IUP that will result in the replacement of 14 of IUP's

residence halls with buildings that integrate a “living-learning” philosophy into their design. The first three phases are complete and will be occupied this fall.

Kutztown University of Pennsylvania’s Health Promotion Services Department was awarded the Educational Excellence Award for its tobacco and alcohol prevention programs at the 13th annual Berks County Community Service Awards Breakfast.

Lock Haven University of Pennsylvania President Keith T. Miller has been appointed to a three-year term as a member of the American Council on Education’s Commission on Women in Higher Education. The term began July 1... Dr. Teresa Williams assumed the position of dean of LHU’s Clearfield Campus on June 1... Lock Haven University was reviewed by the National Council for the Accreditation of Teacher Education (NCATE) in April. According to the examiners, all standards were met. LHU is currently moving through the post-onsite review process, with final work expected by September... The Durrwachter Conference Alumni Center (DACC) has received official certification as a “green” building through the U.S. Green Building Council’s Leadership in Energy and Environmental Design (LEED) program.

Mansfield University of Pennsylvania alumnus Steve Crawford has been named Gov. Edward G. Rendell’s chief of staff. Crawford has been the governor’s secretary of legislative affairs since the beginning of his first term in 2003. As chief of staff, Crawford serves as the top adviser to the governor and manages the day-to-day activities of the executive branch, including 18 cabinet agencies and the Governor’s Office.

Millersville University of Pennsylvania’s undergraduate technology education program has been selected by the Council on Technology Teacher Education as the 2009 Program-of-the-Year. The award was given in honor of Millersville’s program being the first in the country to be nationally recognized for meeting the performance-based technology teacher education standards that focus on the development of technological literacy.

Shippensburg University of Pennsylvania has received continuing accreditation from the Middle States Commission on Higher Education. The 10-year re-accreditation was approved by the commission at the group’s June 25 meeting. In a letter to university President William N. Ruud, Commission Chair Peter F. Burnham said the commission acted “to reaffirm accreditation and to commend the institution for the quality of the self-study process.” In addition, the report noted, “Overall, Shippensburg knows its mission and is performing in an exemplary manner. It is an institution of integrity, and a place of significant student learning.” Shippensburg has held continuing accreditation for nearly 70 years. It was the first teachers college in Pennsylvania and only the fourth in the United States to be accredited by Middle States... Shippensburg hosted PASSHE’s 2009 Summer Honors Program, designed to provide students from each of the 14 State System universities a unique international learning experience. The 28 students participating in the program initially took two courses on European history and political culture at Shippensburg, and then traveled to Belgium and France, where they interacted with residents of those nations to acquire an appreciation not only of European history and political systems, but also of European culture and society, past and present. The honors program has been offered each summer since 1985.

Slippery Rock University of Pennsylvania is included in *The Chronicle of Higher Education's* 2009 Great Colleges to Work For survey. The program, now in its second year, recognizes colleges based on enrollment size for specific best practices and policies, such as compensation and benefits, work environment and institutional practices. The program includes four-year and two-year public and private institutions. SRU placed in the top 10 in five of the 26 categories for medium-size universities (3,000 to 9,999 student enrollment).

West Chester University of Pennsylvania President Greg R. Weisenstein will be inaugurated on September 25th. He assumed the presidency of the university in March.

Fundraising, Grants and Other Awards

Bloomsburg University of Pennsylvania will receive a \$95,000 federal grant for the Center for Computer Forensics Research. The grant will allow the center to expand partnerships between the university and law enforcement agencies by providing for training, service and research related to extracting information from digital media. It also will provide hands-on experience for students enrolled in the bachelor's degree program in computer forensics... The John E. Morgan Foundation established an endowed scholarship fund with an initial \$500,000 installment in June to benefit BU students graduating from Tamaqua High School, beginning in the 2010-11 school year. The foundation also has provided annual scholarships to support students in the Lehigh-Carbon/Bloomsburg completion program in education, students transferring from Lehigh-Carbon Community College to Bloomsburg and Schuylkill County students. The foundation gave \$100,000 in each of the past two years... Bloomsburg University's Husky Research Corp. established three endowed scholarships with a donation of approximately \$75,000 to the Bloomsburg University Foundation. Scholarships of about \$1,000 each will be awarded to two students – one enrolled in BU's instructional technology program and one in the speech pathology/audiology program. Another \$1,000 scholarship will be granted to an upper class scholar-athlete, alternating each year between members of BU's football and softball teams.

California University of Pennsylvania has been awarded three major grants for projects in teaching and environmental conservation. Cal U's Partners for Fish and Wildlife program has been awarded \$900,000 from the Richard King Mellon Foundation to support its work in farmland habitat restoration and watershed conservation. The university has been awarded \$478,862 by the U.S. Department of Education for a five-year project to enhance special education teachers' ability to teach math and science effectively. The project specifically addresses a shortage of special education teachers designated as “highly qualified teachers” in math and science. Cal U's Center for Excellence in Elementary Science and Math Education has been awarded \$379,198 from the PNC Foundation to help preschool children “Grow Up Great With Science.” The two-year project will support efforts to train early childhood educators to use outdoor activities, easily accessible science equipment and inexpensive supplies to create lessons that connect children with science and nature... Cal. U's National Center for Robotics Engineering Technology Education (NCRETE) has been awarded a \$617,000 contract from the U.S. Army Night Vision Laboratory through the Penn State University Electro-Optics Center. The funding continues support for NCRETE's mission of developing the nation's first two-tier, associate and bachelor's degree program in robotics engineering technology (RET). The program meets both commercial and military needs by developing and disseminating an RET curriculum, providing professional development for

educators, and delivering a trained workforce capable of designing, maintaining and operating applied robotics technology within the workplace. The project, now in its fourth year of funding, has been awarded a total of \$3.4 million... Cal U. has announced the public phase of its \$35 million capital campaign, *The Campaign to Build Character and Careers*. The stated goal of the campaign is for “student enrichment and support...to bring a Cal U education within reach of more students, so they can graduate less burdened by debt and better positioned to achieve continued success.”

Clarion University of Pennsylvania has received a \$200,000 grant from the state Department of Labor and Industry to enable its Venango Campus to acquire state-of-the-art medical education equipment. The university will provide a matching amount to provide for additional equipment, which will be shared with the university’s clinical partners at UPMC Northwest and Meadville Medical Center and used to enrich the learning experience in the campus’ nursing, chemistry and biology labs.

East Stroudsburg University of Pennsylvania received a \$191,320 grant to create its new Entrepreneurial Leadership Center (ELC), which provides start-up business services such as business plan support, networking opportunities and referrals to the ESU Business Accelerator program. The center also sponsors community programs and events such as the entrepreneur-in-residence program, lunch and learn workshops, entrepreneurial boot camps and business plan competitions.

Edinboro University of Pennsylvania beat the odds and the bad economy last year to raise \$2.957 million, its second largest total ever, and just short of the last year’s record \$3.187 million.

Indiana University of Pennsylvania received a \$2.5 million gift from Robert E. Cook in support of the Robert E. Cook Honors College. Cook, a 1964 alumnus, previously presented the largest gift in university history to establish the honors college at IUP in 1993. His latest gift brings his total giving to the university to more than \$10 million. The Cook Honors College was the first endowed honors college in Pennsylvania... IUP has been awarded a \$160,000 grant from the Heinz Endowments of Pittsburgh to support the university’s “Promise Plus” initiative, which was established to expand the impact of the Pittsburgh Promise—a program designed to help all students in Pittsburgh Public Schools plan, prepare and pay for education beyond high school at an accredited post-secondary institution in Pennsylvania. The Promise Plus initiative includes early contact with students through IUP student and faculty involvement in classrooms and support in the early grades, enhanced dual enrollment programs to allow high school students to earn college credit via summer programs and hybrid courses and a specific pre-college program that facilitates academic learning skills, adjustment to college, and the application process for both students and parents that would occur at IUP’s main or regional campuses.

Millersville University of Pennsylvania professors Karen Rice and Heather Girvin have received a 2009 National Court Appointed Special Advocates (CASA) Association New Program Development Grant for \$40,000 to hire an executive director to train and support community volunteers in Lancaster County to become the voice of children in the public welfare system. The grant also gives the chapter an opportunity to be renewed for another \$40,000 at the end of the year... The Millersville University Police Department received a \$15,000 grant to pay for hardware and software for managing, processing and analyzing

multi-media evidence. The dTective system will allow investigators to improve digital video images that previously would have been unusable.

West Chester University of Pennsylvania received a nearly \$300,000 National Science Foundation grant for a project titled *Applying Virtual Worlds to Ethics Education in Science*. Philosophy professor Joan Woolfrey will serve as primary investigator... Education professor Larysa Nadolny was awarded a \$250,000 NSF grant for an interdisciplinary research project involving virtual environments... WCU received a \$252,840 grant from the state Department of Environmental Protection to continue its geothermal wells program... The Department of Nursing received three grants totaling \$126,767 from the Pennsylvania Higher Education Foundation, Inc., to support scholarships for WCU nursing students.

University and Community Partnerships

Ground recently was broken on \$15 million in improvements to the Marine Science Consortium on Wallops Island, Virginia. The facility is a non-profit, residential environmental learning center and field station that comprises 15 member institutions, including seven PASSHE universities. The current project will add a new education center, an advanced laboratory building, new residence halls and staff housing facilities and a maintenance building. Participating in the groundbreaking ceremony were PASSHE Chancellor John C. Cavanaugh; **East Stroudsburg University of Pennsylvania** President Robert Dillman, who is president of the consortium's Board of Directors; and **Kutztown University of Pennsylvania** President F. Javier Cevallos. Also taking part in the event was Caroline Massey, assistant director of the neighboring National Aeronautics and Space Administration's Wallops Island Flight Facility. The NASA facility is a participating educational partner with the Marine Science Consortium.

Bloomsburg University of Pennsylvania's partnership with the Workforce and Economic Development Network of Pennsylvania (WEDnetPA) has helped nearly 12,000 Pennsylvania residents gain work-related skills during the past decade. Across the Commonwealth, more than 800,000 employees at 14,000 companies have taken advantage of WEDnetPA's Guaranteed Free Training Program since it began in 1999... Pennsylvania's first migrant leadership institute for middle school students brought 25 youths to Bloomsburg University in June. The pilot program, a collaboration of BU and the Pennsylvania Department of Migrant Education, builds on BU's migrant community project, which has served mostly younger students for the past 13 years.

California University of Pennsylvania's geographic information systems students have developed a GIS database for the Springdale Township Volunteer Fire Department that will help the fire company better respond to fires and other emergencies in the community of nearly 1,900 homes. Dispatchers and firefighters will be able to use the data base to quickly determine special circumstances in and surrounding a home to which they are responding.

East Stroudsburg University of Pennsylvania, with the support of the Greater Pocono Chamber of Commerce, has published *The Guide to Your University Town*, designed to promote "the often overlooked value to local businesses of marketing to ESU students and their families." The guide offers information on local accommodations, restaurants,

shopping and entertainment, as well as city maps and details regarding student groups/organizations, sustainability initiatives, athletics and academics.

Edinboro University of Pennsylvania is working with the Edinboro Business Association and the Erie Regional Chamber and Growth Partnership on the newly formed Edinboro Growth Initiative, an effort to help stimulate and drive economic development and revitalization in the borough. The effort, which was proposed by President Jeremy Brown, began with an inaugural meeting attended by about 50 residents and business owners. The meeting helped kick off a series of events, including the establishment of local committees to plan for the group's formal organization, main street design, promotion, economic restructuring and safety and "green" initiatives... "Friday Flicks" brought back the outdoor drive-in movie feel to Edinboro's campus with free weekly family presentations, each with an education-based theme and accompanying pre-movie program.

Shippensburg University of Pennsylvania has signed an agreement with Harrisburg Area Community College (HACC) that will enable students in HACC's honors program to apply for the honors program at Shippensburg when they transfer to the university. Under the agreement, HACC students must have at least a 3.25 grade point average to be considered for admission to the Shippensburg University Honors Program. Once a student is admitted, all of his or her honors courses at HACC will be transferable to Shippensburg. HACC honors students who transfer to Shippensburg and are admitted to the Honors Program will have the same scheduling, financial aid and student services considerations as other university honors students... Tim Ebersole, executive director for university relations, will serve as a part-time, loaned executive to the Shippensburg Area Chamber of Commerce while the board of directors organizes and searches for a new executive director.

Student and Faculty Recognition

Bloomsburg University of Pennsylvania senior anthropology/French major Jessica D. Dowsett and anthropology professor David Minderhout are conducting research this summer to aid the National Park Service in establishing a historic water trail along the Susquehanna River. Minderhout and Dowsett, along with four faculty from Bucknell University, are researching Native American settlements along the Susquehanna in the early 17th Century. They also will interview individuals with Native American family origins. The research, funded by the Conservation Fund and the Mellon Foundation, will support the creation of the Captain John Smith Chesapeake National Historic Water Trail, stretching from the Chesapeake Bay along the Susquehanna to the New York state border.

Clarion University of Pennsylvania graduate Sean McFarland, who earned a degree in molecular biology/biotechnology in May, has received a full scholarship to the University of California at Berkeley, where he will pursue a Ph.D. in the pathology of the aging. McFarland also earned minors in nanotechnology, chemistry and mathematics while at Clarion... Clarion's debate team finished fourth in the final American Debate Association (ADA) rankings for 2008-2009. The highest individual ranking was in the novice category, where freshmen Braden Picardi of Hatfield and Emily Salim of Little Valley, N.Y., won the ADA National Championship... Darla Kurnal of Venetia and Sean Montgomery of Washington (Pa.) won a Clarion University record number of trophies in the 30th Annual Telly Awards competition. As a team, they won a Silver Telly in the student category and a Bronze Telly in

the documentary category for their documentary “Scripture Rocks.” Kurnal also won two Bronze Tellys in the student category and editing category for her commercial for WCUB-TV, Clarion University’s television station. Kurnal is doing an internship with the Food Channel in New York City this summer and in the fall will be an intern in commercial production at KDKA television in Pittsburgh. Montgomery is doing an internship this summer in commercial production for WTAE-TV in Pittsburgh.

East Stroudsburg University of Pennsylvania sociology major Jocelyn Means of Bethlehem was among 75 students selected nationally to participate in a special leadership academic seminar in Washington, D.C., titled, “The Obama Presidency: The First 100 Days.” The seminar was sponsored by the Washington Center for Internships and Academic Seminars and provided students with an opportunity to study and judge the administrative accomplishments of President Obama during his first 100 days in office...The U.S. Track & Field and Cross Country Coaches Association named ESU’s Joe Koch and Chris Merli as the Men’s Outdoor Track & Field Head Coach and Assistant Coach of the Year for the Atlantic Region.

Indiana University of Pennsylvania junior Sarah Flewelling, an international studies and Asian studies major in the Robert E. Cook Honors College, has been chosen to receive the Pickering Fellowship, which is offered by the Woodrow Wilson National Fellowship Foundation to undergraduate and graduate students who are interested in pursuing a foreign service career in the U.S. Department of State. She is the first IUP student to receive the prestigious fellowship, which will pay all of her expenses for her junior and senior years of college as well as her first year of graduate school. She is attending the Junior Year Institute this summer, will complete an internship in Washington, D.C., after her senior year and will serve an internship at an embassy abroad after her first year of graduate school.

Kutztown University of Pennsylvania associate professor Christine “C.J.” Rhoads recently was honored as one of the Commonwealth’s Best 50 Women in Business for 2009. The 14th annual awards program honors women who hold management positions in companies (owners, presidents, senior executives, board chairs) and commit themselves to professional excellence and to their community. Rhoads serves as CEO and founder of ETM Associates, Inc. a technology-management consulting firm dealing with enterprise technology and management issues in both large and small companies... Professor Marie Cadieux was honored by the [Pennsylvania/Delaware chapter of the American String Teachers Association](#) (PADESTA) with the Outstanding String Teacher of the Year Award. The award is designed to recognize string teachers with six or more years of teaching experience who have advanced the cause and level of string playing and teaching in the states of Pennsylvania and/or Delaware.

Lock Haven University of Pennsylvania softball pitcher Kristin Erb was named winner of the Honda Sports Award as the top female athlete in NCAA Division II. She also won the award as a freshman in 2006. Erb recently led the Lady Eagles to their second national championship in the last four years. She also tied the national record for wins in a season with 50 and finished her career with a 168-18 won-loss record. She recently joined the professional softball ranks in the National Pro Fastpitch League, signing with the Philadelphia Force.

Mansfield University of Pennsylvania's assistant director of public relations, Terry Day, has been elected president of CUPRAP: The Association of Communicators in Education. Day is the first PASSHE representative to lead the organization, which includes communications professionals from colleges, universities and independent schools dedicated to advancing the understanding of higher education and enhancing the professional development of its members.

Millersville University of Pennsylvania meteorology student Shawn Gray took first place in the national weather forecasting contest as part of "The Weather Challenge." Millersville's team finished ninth in the country among 50 universities competing... Millersville's student chapter of the Society for the Advancement of Management (SAM) was awarded first place in the recent annual case-study competition. A professional and student organization that publishes a quarterly journal with cutting-edge research on business management topics, SAM helps prepare students for the real business world.

Shippensburg University of Pennsylvania's student chapter of the Society for Human Resource Management (SHRM) has earned a Superior Merit Award from the national organization in recognition of its outstanding activities and programs... Ten undergraduate Shippensburg University chemistry students presented results of their research at the recent 237th American Chemical Society (ACS) National Meeting and Exposition in Salt Lake City... One current and one former PASSHE employee were honored by the Pennsylvania Athletic Trainers Society (PATS) at its annual symposium and convention. **East Stroudsburg University's** Dr. John Hauth and **Shippensburg University's** Steven Heckler were inducted into the Pennsylvania Athletic Training Hall of Fame. Hauth has been at ESU since 1985 and serves as chair of the athletic training curriculum there. Heckler, who is retired, served as Director of Sports Medicine at Shippensburg University from 1975 to 2002. Both are past presidents of PATS. Nine of the 38 Hall of Fame inductees recognized since its 2000 inception are from PASSHE universities... Shippensburg University's Student Athlete Advisory Committee raised more than \$4,500 for MakeAWish Foundation by sponsoring two different fundraising events on campus.

Spring Sports Championships

Below is a summary of individual and team champions crowned during the spring sports season in the Pennsylvania State Athletic Conference (PSAC):

Baseball – PSAC and NCAA regional champion: West Chester University of Pennsylvania. West Chester and Kutztown Universities qualified for the NCAA regional. Slippery Rock University catcher Matt Adams was named Daktronics Inc. Division II National Player of the Year. He led Division II players with a .495 batting average. Four PSAC players were selected in the Major League Baseball draft: Darin Gorski, Kutztown (7th round, New York Mets); Matt Adams, Slippery Rock (23rd round, St. Louis Cardinals); Derek Kline, Millersville (34th round, Detroit Tigers); and Mark Angelo, East Stroudsburg (44th round, Seattle Mariners).

Softball – PSAC, NCAA regional and NCAA Division II National Champion: Lock Haven University of Pennsylvania. Lock Haven won the NCAA Division II Championship for the second time in four years. The team won both the PSAC and NCAA regional champions for the fourth straight season. Lock Haven pitcher Kristen Erb was named the NCAA Division II

Women's Athlete of the Year (Honda Award). Six PSAC teams qualified for the NCAA regional in an eight-team field: Bloomsburg, California, Kutztown, Lock Haven, Shippensburg and West Chester.

Women's lacrosse – PSAC and NCAA regional champion: Lock Haven University of Pennsylvania. LHU finished as NCAA Division II runners-up. Lock Haven's Kathleen Zichelli was named Intercollegiate Women's Lacrosse Coaches Association Division II Defender of the Year

Men's golf – PSAC and NCAA regional champion: Indiana University of Pennsylvania (finished 12 in NCAA Championship). IUP's Gavin Smith won individual title at Division II national championships. Clarion University's Jared Schmader finished 45th.

Women's golf – California's Simone DeSouza and Dianne Luke qualified as individuals for the NCAA Championship. DeSouza finished as an All-American for the third straight season.

Men's and women's track – Sixty-three combined individual athletes competed in NCAA Division II Championships (27 men in 14 events and 36 women in 15 events). PSAC combined for 26 All-Americans. Neely Spence of Shippensburg was a national champion in the 5,000 meter and Nafee Harris of IUP won the long jump.

PSAC schools combined for a total of 17 CoSIDA/*ESPN The Magazine* Academic All-America selections during 2008-09. Eleven schools had at least one Academic All-American. The PSAC had representatives on nine of the 12 Academic All-America teams as selected by the College Sports Information Directors of America (CoSIDA), including women's soccer, women's volleyball, football, men's basketball, softball, men's and women's at-large and men's and women's cross country/track & field.

PSAC CoSIDA/*ESPN The Magazine* Academic All-Americans:

Women's Soccer – First team: Taylor Hilinski, Mercyhurst; third team: Ashley Jones, Edinboro. **Women's Volleyball** – First team: Jen Blasko, Slippery Rock. **Football** – First team – Jon Ochs, Bloomsburg; Ryan Nye, Kutztown; Bryan Boyce, Mercyhurst. **Men's Basketball** – Second team: Kyle Goldcamp, Gannon; third team: Chris Bach, East Stroudsburg. **Softball** – **First team** – Sonia Petrosniak, California. **Women's At-Large** – First team: Kelley Healey, Kutztown (field hockey). **Men's At-Large** – First team (University Division): Jarrod King, Edinboro (Wrestling). **Women's Cross Country/Track & Field** – First team: Mary Dell, Shippensburg; second team: Jennifer Harpp, Slippery Rock; third team: Priscilla Jennings, Millersville; Erin Richard, Clarion. **Men's Cross Country/Track & Field** – Second team: Chris Clark, California; third team, Paul Wagner, East Stroudsburg.

Chris Clark of **California University of Pennsylvania** and Jamie Maloney of **Clarion University of Pennsylvania** were named winners of the inaugural PSAC Sportsmanship Award. The award is given to one male and one female student-athlete who best exemplify the spirit of sportsmanship and who have demonstrated the values of respect and integrity through a specific action ideally directed toward an opponent.

Executive Summary of Degree Proposal

Master of Science in Nursing Degree with a Major in Nursing Administration and Leadership (Online) California University of Pennsylvania

(July 15, 2009)

1. Appropriateness to Mission

The Master of Science in Nursing (MSN) degree with a major in Nursing Administration and Leadership is designed to provide the education and skills required for administration and leadership expertise in nursing roles in the healthcare industry. The proposed program is in alignment with the mission of the University and the Pennsylvania State System of Higher Education (PASSHE). The PASSHE Strategic Plan Directions for 2004-2009, "Leading the Way," identifies critical trends shaping the future of learning in Pennsylvania, and the MSN program at California University of Pennsylvania (Cal U) will address several of these trends. The MSN program will contribute to "...the growth in the enrollment of out-of-state students, adult learners, graduates students, and students reached through...an on-line program" (p.3). The MSN program aligns with various aspects of the five core areas of the Strategic Plan, but most closely with several of the sub-strategies under Strategy #1: *Student Achievement and Success* and #3: *Commonwealth Service*.

The proposed MSN program will be completely online and be part of California University of Pennsylvania's Global Online program. The faculty will utilize advanced methodology and innovation associated with teaching and learning to provide educational opportunities to nurse administrators and leaders who might otherwise not be able to adhere to a traditional course schedule.

2. Need

There is a high demand for qualified nursing leaders within the healthcare industry. Master's preparation in nursing is necessary to develop nursing leaders who can function among their peers in a global community. Traditional on-campus MSN programs are not a viable option for many nursing administration and leadership professionals. With an online program, students have the opportunity to earn a degree without sacrificing professional commitments. A MSN degree is necessary to prepare advanced nurses in all of the dimensions desired to fulfill their role; no other advanced degree can meet this requirement. The MSN program at Cal U will prepare advanced practitioners who will address prevailing health and nursing issues, have a comprehensive understanding of and beginning competence in nursing research, and have a foundation for doctoral study in nursing.

3. Academic Integrity

The MSN program will maintain the highest level of academic integrity and will be guided by standards developed by the American Association of Colleges of Nursing (AACN, 2008). The AACN is the national voice for America's baccalaureate- and higher-degree nursing education programs. California University of Pennsylvania's Bachelor of Science in Nursing (BSN) program received a full 10-year accreditation from the AACN-Commission on Collegiate Nursing Education (CCNE) in 2003. The AACN's programs, including education, research, governmental advocacy, data collection, publications, and others have established quality standards for undergraduate and graduate nursing education.

The MSN program's curriculum was developed using the AACN's document, "The Essentials of Master's Education for Advanced Practice Nursing" (AACN, 1996) AND CRITERIA FROM THE Nursing Administration Certification Exam developed by the ANCC Credentialing Center, and the American Association of Nurse Executives (AONE/AACN) "Essentials of Nurse Manager Orientation" (American Nurses Credentialing Center, 2006).

4. Coordination with Other Programs

Currently there are no other online MSN programs in nursing administration and/or leadership within PASSHE. As part of the Global Online network, the MSN program will seek other courses that will fulfill the cognate course requirements or students' specific areas of interest.

5. Assessment and Accreditation

Student learning outcomes will be assessed using a Three-Year Systematic Evaluation Plan that is developed to assess students' progress through the program. Outcome assessments will ensure continuous quality improvement. Annual review of student learning outcomes will be based on a plan to measure all learning goals and include insight from the MSN program coordinator, program faculty, department chairperson, distance learning and technology experts, and students, graduates, and employers of alumni. Evidence of outcome assessment will be submitted to the University-Wide Assessment Committee on a yearly basis.

The Three-Year Systematic Evaluation Plan and Calendar will guide the program's outcomes in preparation for certification. The MSN program was developed in accordance with the AACN-CCNE standards in anticipation of applying for program approval immediately after graduating one cohort. The CCNE is an autonomous accrediting agency of the AACN that ensures the quality and integrity of baccalaureate and graduate education programs preparing effective nurses.

6. Resource Sufficiency

The proposal details a budget outlining the financial support necessary for implementation and operation of the proposed program. Funds requested will ensure sufficient staff and support resources, learning resources, instructional equipment, and facilities.

7. Impact on Educational Opportunity

The educational opportunity created by the MSN program is significant on a local, state, national, and global level. Professionals who might not otherwise be able to pursue a graduate degree in the traditional on-campus setting will be afforded the opportunity to pursue a high level, affordable, accelerated, graduate degree from an outstanding institution of higher learning.

There is a lack of qualified nurses to fill nursing managerial roles in the nation's 7,569 hospitals (ANCC, 2008), over 16,000 nursing homes (American Health Care Association survey, 2002), and other health care facilities. The U.S. department of Labor reported that medical and health services managers held about 262,000 jobs in 2006 (Bureau of Labor Statistics, 2008a). About 30% of these worked in private hospitals, and another 16% worked in offices of physicians or in nursing care facilities. The remainder worked in home health care services, Federal Government health care facilities, ambulatory facilities, outpatient care centers, insurance carriers, and community care facilities for the elderly.

Currently, the American Hospital Association reports the average vacancy rate for nurse managers is 6.5%, with higher vacancy rates in urban hospitals and in western and southern regions of the U.S. Over the next 10 years, it is predicted that these numbers will increase, and there will be a major shortage of qualified nurse managers. Nurse administrators' average age is 48, and as they retire or move on to other roles, qualified nurses need to be ready to fill these administrative vacancies (American Hospital Association, 2000; Nursing Management's Salary Survey, 2005).

Prepared by: Ms. Geraldine Jones, Provost and Vice President for Academic Affairs

Implementation Date: Spring 2010

FIVE YEAR BUDGET PROJECTION*

UNIVERSITY: California University of Pennsylvania

PROPOSED PROGRAM: Master of Science in Nursing Degree with a Major in Nursing Administration and Leadership (Online)

ESTIMATED REVENUES	Year 1		Year 2		Year 3		Year 4		Year 5	
	Existing	New	Existing	New	Existing	New	Existing	New	Existing	New
Projected University E&G or Tuition		\$158,055	\$248,486	\$165,657	\$260,913	\$173,942	\$273,924	\$182,616	\$287,784	\$191,856
External Grants and Contracts		0	0	0	0	0	0	0	0	0
Other=Fees+		\$6,426	\$9,828	\$6,552	\$10,025	\$6,678	\$10,217	\$6,804	\$10,410	\$6,930
TOTAL REVENUE++		\$164,481	\$430,523		\$451,558		\$473,561		\$496,980	
ESTIMATED EXPENSES	Year 1		Year 2		Year 3		Year 4		Year 5	
Salaries and/or benefits (Faculty and Staff)		\$126,869	\$148,524	\$37,792	\$143,234	\$38,548	\$153,997	\$34,337	\$156,813	\$40,106
Learning resources		\$10,000		\$5,000		\$5,000		\$5,000		\$5,000
Instructional Equipment		\$34,310		\$10,200		\$10,200		\$12,200		\$12,200
Facilities and/or modifications		\$10,000		0		0		0		0
Other		\$105,000		\$113,100		\$111,970		\$128,675		\$139,320
TOTAL EXPENSES		\$286,179	\$314,616		\$308,952		\$334,209		\$353,439	
DIFFERENCE (Rev.-Exp.)		\$-121,698	\$115,907		\$142,606		\$139,352		\$143,541	
ESTIMATED IMPACT OF NEW PROGRAM	Year 1		Year 2		Year 3		Year 4		Year 5	
FTE Enrollment		35**		70**		70**		70**		70**
Projected Annual Credits Generated		420		1050		1050		1050		1050
Tuition Generated+++		\$158,055		\$414,143		\$434,855		\$456,540		\$479,640

*Information for MSN program only, not existing BSN program. **35 part time students/cohort/year. 6 credits/term; 1st yr. SP, SU 2010; 2nd yr. FA, SP, SU. Second cohort to enter SP 2011. +Fees=2% est. infl/yr (2008-09 base=\$15/credit). ++Tuition=5% est. infl/yr (2008-09 base=\$357 PA resident; \$364 non-PA resident). 80% PA resident; 20% non-PA resident. Total Revenue includes fees. +++Tuition generated does not include fees.

Executive Summary of Degree Proposal

Bachelor of Science in Nursing (BSN) Degree with a Major in Nursing (Online)

Lock Haven University of Pennsylvania

(July 15, 2009)

1. Appropriateness to Mission

Lock Haven University proposes the development of an online Bachelor of Science in Nursing (BSN) degree with a major in Nursing. This program will be an RN-to-BSN completion program, with curriculum designed for entry of the registered nurse with a diploma or Associate of Science Degree in Nursing. The program is based on the tenets of the Pennsylvania Articulation Model (The Pennsylvania Coalition for Nursing Education, September, 1993). The addition of a BSN program will serve to strengthen the University's position within the Commonwealth by addressing the call from the Chancellor (Fall, 2003) to create new opportunities for students, establish academic programs in fields most in demand from Pennsylvania employers, and form partnerships with communities surrounding PASSHE campuses to improve the economy and quality of life for all Pennsylvanians.

The goals of the BSN program are consistent with the mission and strategic plan of Lock Haven University. The baccalaureate-prepared nurse is liberally educated; is expected to master discipline-specific knowledge and to incorporate and apply knowledge gained from other disciplines into nursing practice; and is prepared to embark on a career path to include life-long learning, a commitment to the profession and recognition of personal and civic responsibilities in a multi-cultural and global community.

2. Need

News of the nursing shortage abounds. The introduction of a BSN program represents an overt response to addressing needs of the region, state, nation, and international community. Additionally, the National Advisory Council on Nurse Education and Practice (2001) has urged that at least two-thirds of the nurse workforce hold BSN or higher degrees. Published research (Aiken, et al., 2003) suggests that patient outcomes are improved with an increase in the presence of baccalaureate-prepared nurses because they are valued for their skills in critical thinking, leadership, case management and health promotion, and for their ability to practice in a variety of settings. Notably today, only 43% meet the criteria. Given the calls for a better educated nursing workforce, more registered nurses are pursuing baccalaureate level education. From 2006 to 2007, enrollment in RN-to-BSN programs increased by 11.5%. This trend is encouraging since the National Sample

Survey of Registered Nurses (U.S. Dept. of Health and Human Services) found that only 17.4% of nurses educated in associate degree programs go on to complete a four-year nursing degree program.

Nursing programs of this nature attract a wide range of students as it is online and allows flexibility for the working nurse. The BSN program will contribute significantly to the local and regional workforce by enhancing the quality of healthcare services and improving the overall health of individuals and communities they serve. As this program will be online, the value of the potential national impact of the program could be substantial, as it will allow the working nurse to continue to pursue education while remaining in the workforce.

3. Academic Integrity

The primary goal of the BSN program is to prepare a practitioner who is able to function in a variety of settings: providing care of the sick in and across environments; participating in, planning, implementing and evaluating activities and programs to promote health; and facilitating population-based health care. The curriculum is academically sound and is in concert with the university's general education, progression, and graduation requirements. The curriculum plan incorporates the Essentials of Baccalaureate Nursing Education (AACN, 2008) and is designed to meet accrediting body standards. This program will be an RN to BSN completion program, with curriculum developed to allow for entry into the program after completion of an associate's degree or diploma in nursing. It is designed to provide a solid foundation in the liberal arts and natural and social sciences. RN-to-BSN students must have proof of graduation from a basic program of nursing and proof of current registered nurse licensure. General science requirements will be completed before beginning 400 level nursing courses. The general education component of the program can be completed through traditional coursework, web-based courses, or CLEP. The twenty-six (26) credits of nursing courses will be offered online. Progression in the program will require completion of all prerequisites and requirements. Students will be advised by nursing faculty throughout the program.

Learning experiences and clinical placements will vary within and among courses. Although the nursing courses in the program will be offered as web-based courses, a variety of teaching modalities may be used such as individual and group projects, journaling, workshops and attendance at professional conferences in addition to computer-based course work. Students will learn and apply knowledge utilizing state-of-the-art technology whenever possible. Clinical placements provide the venue for application of learning and skill performance.

Minimum requirement for faculty include a master's degree in nursing, graduate preparation in the area of teaching and/or functional areas of responsibility and documented evidence of maintaining expertise in clinical and/or functional areas of responsibility. A faculty member with an earned doctorate in nursing will direct the program.

4. Coordination with Other Programs

Faculty and students will have opportunities to interact with peers in nursing programs at other area colleges and universities. Graduates of area schools that train licensed practical nurses currently come to the University to earn their associate degree in nursing. With the development of an RN-to-BSN program they can enter the workforce upon graduation from the associate degree program, attend classes to complete their general education requirements, and progress into the on-line program. Natural and health science courses required for nursing majors will include students from other programs. Nursing faculty may collaborate with colleagues from other disciplines to explore new learning opportunities for students.

5. Assessment and Accreditation

The Department of Nursing will participate in the institutional review process within the University that applies to all departments. The State Board of Nursing does not regulate RN-to-BSN programs. The program will seek accreditation by the National League for Nursing Accreditation Commission (NLNAC). The initial report and site visit occur prior to graduation of the first class and subsequent visits are required on 5- to 10-year cycles. Programs are expected to maintain ongoing self-evaluation and to keep records related to program outcomes and other elements identified on a comprehensive Systematic Plan of Evaluation. Accreditation will be pursued to ensure that students in the charter class will graduate from an accredited program. The framework for the Self-Study Report required by NLNAC for accreditation is already in place. Distance education programs in nursing are held to the same stringent requirements of programs utilizing traditional educational methods. While developing and seeking accreditation of the RN-to-BSN program the University will defer to the Alliance for Nursing Accreditation Statement on Distance Education Policies.

6. Resource Sufficiency

Currently all courses required for the entry into the program and the general education component of the program are available at both campuses of the University. Many of the courses are offered online. The eight nursing courses have been developed and have been approved by the College Curriculum Committee and are awaiting final review by the University Curriculum Committee. A Ph.D. prepared faculty member will be hired to assist with teaching web-based courses and participate in seeking accreditation of the program. Four of the current Nursing faculty have been involved in the development of the courses and will continue to be involved in further course development and instruction. Four nursing faculty members are e-Certified and ready to teach online courses.

7. Impact on Educational Opportunity

Three of seven counties have no nursing programs. As indicated earlier, those that do have programs have all experienced tremendous growth in their applicant pools and many have waiting lists for admission. Adding an RN to BSN program will improve the region's ability to service both the prospective student population and the healthcare industry.

Prepared by: Dr. Roger Johnson, Interim Provost and Vice President for Academic Affairs

Implementation Date: Fall 2009

FIVE YEAR BUDGET PROJECTION

UNIVERSITY: Lock Haven University of Pennsylvania

PROPOSED PROGRAM: Bachelor of Science in Nursing (BSN) Degree with a Major in Nursing (Online)

ESTIMATED REVENUES	Year 1		Year 2		Year 3		Year 4		Year 5	
	Existing	New	Existing	New	Existing	New	Existing	New	Existing	New
Projected University E&G or Tuition		\$157,605	\$119,421	\$132,690	\$122,976	\$150,304	\$126,576	\$154,704	\$130,509	\$159,511
External Grants and Contracts										
Other										
TOTAL REVENUE	\$157,605		\$252,111		\$273,280		\$281,280		\$290,020	
ESTIMATED EXPENSES	Year 1		Year 2		Year 3		Year 4		Year 5	
	Existing	New	Existing	New	Existing	New	Existing	New	Existing	New
Salaries and/or benefits (Faculty and Staff)		\$146,385		\$206,833		\$216,075		\$225,421		\$234,881
Learning resources		\$4,000								
Instructional Equipment		\$6,000		\$2,000		\$2,000		\$2,000		\$2,000
Facilities and/or modifications										
Other		\$10,000		\$5,750		\$5,750		\$5,750		\$5,750
TOTAL EXPENSES	\$166,385		\$214,583		\$223,825		\$233,171		\$242,631	
DIFFERENCE (Rev.-Exp.)	\$-8,780		\$37,528		\$49,455		\$48,109		\$47,389	
ESTIMATED IMPACT OF NEW PROGRAM	Year 1		Year 2		Year 3		Year 4		Year 5	
	Existing	New	Existing	New	Existing	New	Existing	New	Existing	New
FTE Enrollment	23 (10 Full-time; 20 Part-time)		44 (19 Full-time; 38 Part-time)		47 (20 Full-time; 40 Part-time)		47 (20 Full-time; 40 Part-time)		47 (20 Full-time; 40 Part-time)	
Projected Annual Credits Generated	26 Credits (FT) 16 Credits (PT)		25-26 Credits (FT) 16 Credits (PT)		25-26 Credits (FT) 16 Credits (PT)		25-26 Credits (FT) 16 Credits (PT)		25-26 Credits (FT) 16 Credits (PT)	
Tuition Generated	\$157,605		\$252,111		\$273,280		\$281,280		\$290,020	

Executive Summary of Degree Proposal

Bachelor of Arts Degree with a Major in Liberal Studies Cheyney University of Pennsylvania

(July 15, 2009)

1. Appropriateness to Mission

The Cheyney University Bachelor of Arts degree with a major in Liberal Studies program corresponds with the goals of Cheyney University, the Department of Humanities and Communication Arts, and the Pennsylvania State System of Higher Education.

The proposed Liberal Studies program addresses several aspects of the Pennsylvania State System of Higher Education's overall mission, such as providing an excellent education at the lowest possible cost; offering undergraduate programs that address regional needs; and providing public services and leadership for the Commonwealth.

The program is aligned with key elements of the University's Strategic Plan, "Pathways to Greatness, 2004 and Beyond." Specifically, the proposed program corresponds to several objectives under Strategic Goal 1: Strengthen Academic Quality and Excellence, and Strategic Goal 2: Advance Student Achievement and Success.

2. Need

Graduates of the Liberal Studies/Arts programs will have a variety of skills, such as communication and critical thinking that can be applied to numerous employment opportunities. According to governmental and business data, liberal arts majors' employment and salaries have increased over time (Gehlhaus 4). A liberal arts education is more important than ever due to the increasing demand for broad learning about humanity, nature, and the universe (Wallin Message in American Academy for Liberal Education Standards and Criteria Program Accreditation ii).

The Liberal Studies program is likely to attract nontraditional and transfer students as well as traditional students because of its uniqueness. Nontraditional and independent-minded students of the Internet generation look for opportunities to tailor programs to meet their personal needs and the demands they envision in an ever-changing job market. They relish the opportunity to craft their own programs with the one-on-one assistance of advisers in each area of their interest.

In addition, this program is expected to help retain students who have changed majors, accumulated many semester hours of credit, but have not fulfilled the requirements for graduation in any programs currently available. Too often, such students are discouraged because they now face the prospect of losing their financial aid. This program could allow them to graduate in a timelier manner, gain employment or pursue a specialty in graduate school.

3. Academic Integrity

The Liberal Studies program offers a unique opportunity to students who expect opportunities to participate in designing programs to meet their visions and needs and the needs of the workforce in the 21st century. Students today want flexibility. This program offers that opportunity, under the watchful eyes of advisers in more than one area, to combine concentrations and prepare for careers of the future.

The principal mission of the proposed Liberal Studies program is to educate students who can effectively operate in a variety of settings, including media, public and private early educational institutions, governmental and nongovernmental agencies, and corporate America. Graduates with a bachelor's degree will also have the critical skills necessary to successfully address the current and future workforce needs of the Commonwealth of Pennsylvania. By so doing, graduates in the Liberal Studies program will be positioned to enhance and uplift the entire Cheyney University community, their home communities, future generations, the Commonwealth of Pennsylvania and the nation.

In addition to their General Education requirements, students in the Liberal Studies program will take 15 credit hours prescribed in the Liberal Studies core. The Liberal Studies degree program will have core learning outcomes instead of core courses. For each outcome, students will, with the approval of advisers, have a choice of different courses in a variety of disciplines that will meet that outcome.

The remaining 54 semester hours for the degree program will include one or more specific concentrations. Students will work with advisers in choosing from major field electives in that/those concentration(s) to complete their required 120 credit hours. At least 48 credit hours of each student's program of study must be in 300 or 400-level courses. Students will be required to complete a senior seminar capstone course in one of their areas of concentration. Students will also be encouraged to minor in one or more degree program areas as part of their respective programs of study.

4. Coordination with Other Programs

The Liberal Studies major will draw on programs in electronic media, print journalism, and public relations. Faculty in each of these areas of the concentration will serve as advisers to students and will serve as academic advisers during the service learning/co-op/internship placement process. All advisers will meet with the

coordinator at regular intervals to ensure the successful completion of students in the program and to recommend and implement improvements to the program.

Cheyney University is well situated to offer a degree program in Liberal Studies because of the accessibility of business and media experts (some of them, Cheyney University graduates) and the proximity to Philadelphia, the nation's fourth largest television market, sixth largest radio market, and sixteenth largest newspaper by circulation, the *Philadelphia Inquirer*. Cheyney University's location adds to the program's teaching pool and co-op/internship opportunities.

In addition to media markets, Cheyney University has placed interns in public relations departments at the local hospital, the Philadelphia Zoo, theme parks, governmental offices in Harrisburg and Washington, D.C., and many others. All of these have been successful and are available for future students (Cheyney University Center for Career and Professional Development).

5. Assessment and Accreditation

The program plans to seek accreditation through the American Academy for Liberal Education (AALE) when appropriate. The proposed program goals correspond with the AALE's educational standards and criteria. Assessment of the Liberal Studies program and student learning will occur on a regular and comprehensive basis and the results will be used to improve teaching and learning. Assessment plans are directly aligned with AALE accreditation requirements (Standards and Criteria Program Accreditation 1). Also, each semester, students will present online portfolios that have been continually updated as evidence of their progress. Students working in groups will include group and self-assessments in their portfolios.

6. Resource Sufficiency

One strength of the Liberal Studies program is that the program makes excellent use of the university's resources. Cheyney University has the space and technology to support the program already in place. Cheyney University has computer labs, a new cable radio station, two television facilities and a student newspaper in place, so there will be ample opportunities for publicity and for students to gain hands-on experience on campus. Just as important, the courses are in place. But most important for the success of the program, Cheyney University has a strong, diverse, and seasoned faculty in place. Because the university is small, faculty have the tradition of cooperating across departmental and school lines.

7. Impact on Educational Opportunity

Cheyney University produces qualified graduates who make significant contributions to their communities, the Commonwealth, the nation, and the world. Building upon this historic charge, Cheyney University is well positioned to develop an undergraduate program that will increase the number of minorities prepared for the workforce in Pennsylvania and for graduate study. This program will offer a

challenging curriculum to uphold Cheyney University's tradition of academic excellence as it continues to be faithful to its historic commitment to educating students whose academic development may have been limited by lack of economic, social, or educational opportunity. A Liberal Studies program will meet their needs as well as the needs of other, more advantaged students. A Bachelor of Arts in Liberal Studies program meets their needs by being individually crafted to support their achievements and aspirations. Regular and nontraditional students alike will have access to a variety of courses and programs that interest them to prepare them to take advantage of opportunities in a challenging and changing job market. Thus, Cheyney University students and faculty will work together to continue to design and offer instruction that is responsive to the needs of a vibrant urban and suburban community.

Prepared by: Dr. Ivan Banks, Provost and Vice President for Academic Affairs

Implementation Date: Fall 2009

FIVE YEAR BUDGET PROJECTION

UNIVERSITY: Cheyney University of Pennsylvania

PROPOSED PROGRAM: Bachelor of Arts Degree with a Major in Liberal Studies

ESTIMATED REVENUES	Year 1		Year 2		Year 3		Year 4		Year 5	
	Existing	New	Existing	New	Existing	New	Existing	New	Existing	New
Projected University E&G or Tuition		\$155,519		\$164,853		\$269,376		\$355,888		\$372,780
External Grants and Contracts										
Other										
TOTAL REVENUE	\$155,519		\$164,853		\$269,376		\$355,888		\$372,780	
ESTIMATED EXPENSES	Year 1		Year 2		Year 3		Year 4		Year 5	
	Existing	New	Existing	New	Existing	New	Existing	New	Existing	New
Salaries and/or benefits (Faculty and Staff)	\$75,759		\$124,432		\$239,742		\$245,735		\$251,877	
Learning resources										
Instructional Equipment										
Facilities and/or modifications										
Other										
TOTAL EXPENSES										
DIFFERENCE (Rev.-Exp.)	\$79,760		\$40,421		\$29,634		\$110,153		\$120,903	
ESTIMATED IMPACT OF NEW PROGRAM	Year 1		Year 2		Year 3		Year 4		Year 5	
	FTE	Enrollment	FTE	Enrollment	FTE	Enrollment	FTE	Enrollment	FTE	Enrollment
FTE Enrollment	10 (Freshmen) 5 (Transfer)		17 (Traditional) 12 (Transfer)		24 (Traditional) 22 (Transfer)		31 (Traditional) 28 (Transfer)		40 (Traditional) 20 (Transfer)	
Projected Annual Credits Generated	450		870		1440		1770		1770	
Tuition Generated										

Executive Summary of Degree Proposal

Master of Science Degree with a Major in Information Security (Online)

East Stroudsburg University of Pennsylvania

(July 15, 2009)

1. Appropriateness to Mission

East Stroudsburg University of Pennsylvania (ESU) is a National Center of Academic Excellence in Information Assurance Education, one of less than 100 such institutions certified by the U.S. National Security Agency (NSA) and the U.S. Department of Homeland Security (DHS). This designation is based on the successful ESU Bachelor of Science degrees in Computer Science and Computer Security and the successful ESU Master of Science degree in Computer Science. The ESU Computer Science Department now proposes the creation of a Master of Science degree in Information Security. This unique program will allow students to complete a Master's degree *fully online*. The program is intended for students with interest in system security administration and will allow students who have undergraduate experience in Computer Science, Computer Security, or Information Technology the opportunity to continue their education on the Master's level. Also, by completion of the program, students will earn six national certifications.

2. Need

There are various noteworthy motivating factors for the ESU Information Security graduate program. As indicated below, current student desire for a graduate program in information security is very high. Students see a program of this type as beneficial to their education, knowledge, and future employment possibilities and they are excited about further research opportunities with faculty in the stimulating world of computer and information security. Second, there is a high demand for master's students with knowledge in information security, as indicated by multiple employment trend reports. A third motivating factor behind the program is national security. As mentioned in the *National Strategy to Secure Cyberspace* (www.whitehouse.gov/pcipb), a major policy document on national security, "Key to any successful national effort to enhance cybersecurity must be a national effort to ... maintain an adequate pool of well trained and certified information technology security specialists... The nation must focus resources on training a talented and innovative pool of citizens that can specialize in securing the infrastructure." The ESU Information Security graduate program will help meet this need for national security.

The ESU Information Security graduate program is necessary to ESU, PASSHE, the Commonwealth, and the nation. Current students are very interested in such a program, and we also foresee the program attracting existing corporate

professionals, as well as government and military personnel, who want to further their education. The program also will allow ESU and PASSHE to continue its leadership in the field of information assurance. Finally, the program will challenge students, helping to expand their critical thinking abilities. All program candidates will perform extensive research, allowing them to learn this critical skill. The ESU Information Security graduate program is a necessary addition to the ESU Computer Security program.

3. **Academic Integrity**

The ESU Information Security graduate program is a rigorous technical program for students with undergraduate experience in Computer Science, Computer Security, or Information Technology, and interested in furthering their knowledge in system security administration. All students in this program are required to complete a thesis under the direction of a faculty member, which will be judged by a thesis committee of faculty members.

The ESU Information Security graduate program curriculum has been designed with multiple goals. One goal was that the design should be based on two models of curriculum. First, the successful ESU Master's in Computer Science was used as a model. In the Computer Science program, students are required to complete rigorous courses which give them theoretical as well as practical abilities. Students are also required to complete a major research project with a thesis and defense. All of these elements have been included in the Information Security graduate program.

The Information Security graduate program has been designed to be a rigorous program, and hence students must meet a high level of prerequisites to enter the program. All applicants must have completed a Bachelor's degree in a technical field related to computing, and they should have experiences in mathematics and science. In particular, applicants should have a Bachelor's degree in Computer Science, Computer Security, or Information Technology. Specific ESU courses may be required by the Information Security graduate program advisor for student remediation.

To help students be aware of and meet these high expectations, they will be advised and mentored in a three-tiered approach. Students will have a thesis or research advisor to help with the completion of their research requirements; students will have access to the Computer Science Department Chair for administrative issues; and, students will have access to the Computer Security Program Director for advice on course selection, research project selection, general mentoring, etc.

4. **Coordination with Other Programs**

Since the Information Security graduate program is a graduate program housed in the Computer Science Department and unaffected by most undergraduate curriculum, other departments or campus units have not been involved in the program development. It is possible that the program will have some effect on the ESU Mathematics Department since students are required to have some

mathematical knowledge upon entrance to the program. However, we foresee few students in need of mathematics remediation. Also, the Mathematics Department currently remediates Computer Science graduate students who do not have the prerequisites, and has agreed to continue this service. The Mathematics Department service will provide any Computer Science, Computer Security, or Information Security students with the necessary mathematics remediation.

One of the strengths of the ESU Information Security graduate program is its relationship with outside organizations. One group of organizations is those in the federal sector, such as the U.S. Department of Defense (DOD), the U.S. Department of Justice (DOJ), the Department of Homeland Security (DHS), and the U.S. National Security Agency (NSA). These relationships include the National Center of Academic Excellence in Information Assurance Education Program, sponsored by NSA and DHS, the Information Assurance Scholarship Program, sponsored by the DOD, and the newly formed Cyber Crime and Computer Forensics Institute, sponsored by the DOJ. A second group of organizations is those within the Commonwealth, such as the PA Department of Community and Economic Development, and the PA Department of Labor and Industry. The ESU Information Security Graduate Program will help these relationships grow.

5. **Assessment and Accreditation**

Multiple tools will be used to help assess the student learning outcomes. First and foremost, each course will have its own form of assessments, such as exams, class participation and discussion, interactive in-class work, analysis of case studies, practical projects, research papers, student presentations, and team exercises. Each of these will allow the instructor to assess student learning, and as each instructor will be in close relationship to the Computer Security Program Director, so as to maintain a focal point for assessment. Second, all exiting students will be surveyed to determine if their needs have been met from the students' point of view. Third, the Computer Science Department completes a "Program Review" every five years to help analyze its success and plan for the future. As part of this review, the assessment of courses and programs is included. Student learning outcomes in the Information Security graduate program will be included in this assessment. A fourth method of assessment will include the research projects and theses created by the students in the Information Security graduate program. Each thesis will be reviewed by at least three members of the Computer Science graduate faculty, and hence will allow the faculty the opportunity to assess the learning of students performing research. Finally, employers will be used for assessments on a regular basis. Since the ESU Computer Science Department has strong industrial ties, such assessment will occur on an ad-hoc basis. Furthermore, the department maintains a "Board of Visitors" which includes approximately ten computer science professionals from outside academics. This Board meets with the department biennially, and has a great hand in helping the department assess its programs. Student learning outcomes are always a large part of this assessment.

6. **Resource Sufficiency**

The expenses related to the Information Security graduate program will be well balanced by the benefits of the program. Major costs include equipment funding, advertising costs, costs for certification and relationships with federal agencies such as the National Security Agency, the addition of one new faculty member to the Computer Science Department, release time for the Computer Security Program Director to manage multiple programs (undergraduate and graduate) and maintain the certifications, the addition of one new graduate assistant, and an increase in the Computer Science Department budget for materials, supplies, and research journals.

7. **Impact on Educational Opportunity**

The largest effect on under-represented groups of students will be related to the inclusion of more atypical college students. That is, the goal of the program is to have many more existing professionals as participants than we would see in the typical university program. This is the purpose of designing a program which is fully online. In this way, we plan for professionals practicing in the field of information systems but now interested in advancing their knowledge to computer and information security. Furthermore, the addition of markets such as Philadelphia, New York, urban New Jersey, and Washington, DC, should allow for an increase of diversity in the student population.

Prepared by: Dr. Kenneth Borland, Jr., Provost and Vice President for Academic Affairs

Implementation Date: Fall 2010

FIVE YEAR BUDGET PROJECTION

UNIVERSITY: East Stroudsburg University of Pennsylvania

PROPOSED PROGRAM: Master of Science Degree with a Major in Information Security (Online)

ESTIMATED REVENUES	Year 1		Year 2		Year 3		Year 4		Year 5	
	Existing	New	Existing	New	Existing	New	Existing	New	Existing	New
Projected University E&G or Tuition		\$109,000		\$113,000		\$177,000		\$184,000		\$255,000
External Grants and Contracts		\$100,000		\$100,000		\$100,000		\$100,000		\$100,000
Other										
TOTAL REVENUE	\$209,000		\$213,000		\$277,000		\$284,000		\$355,000	
ESTIMATED EXPENSES	Year 1		Year 2		Year 3		Year 4		Year 5	
	Existing	New	Existing	New	Existing	New	Existing	New	Existing	New
Salaries and/or benefits (Faculty and Staff)		\$90,000		\$92,000		\$95,000		\$97,000		\$99,000
Learning resources		\$1,000		\$1,000		\$1,000		\$1,000		\$1,000
Instructional Equipment		\$5,000		\$5,000		\$10,000		\$10,000		\$15,000
Facilities and/or modifications										
Other ¹		\$50,000		\$50,000		\$52,000		\$52,000		\$54,000
TOTAL EXPENSES	\$146,000		\$148,000		\$158,000		\$160,000		\$169,000	
DIFFERENCE (Rev.-Exp.)	\$63,000		\$65,000		\$119,000		\$124,000		\$186,000	
ESTIMATED IMPACT OF NEW PROGRAM	Year 1		Year 2		Year 3		Year 4		Year 5	
	Existing	New	Existing	New	Existing	New	Existing	New	Existing	New
FTE Enrollment		6.7		6.7		10		10		13.3
Projected Annual Credits Generated		180		180		270		270		360
Tuition Generated	\$109,000		\$113,000		\$177,000		\$184,000		\$255,000	

Exceptions to the 120-Credit Requirement in Board of Governors' Policy 1990-06A

(July 15, 2009)

Selected System-wide baccalaureate degree programs will be granted an exception to the 120-credit maximum requirement because of extensive regulatory and accreditation requirements currently in place.

Education

The following programs will be permitted graduation credit totals not to exceed 123 credits through spring 2011, at which time the exceptions will be reviewed:

- Communications (7-12)
- Cooperative Education (7-12)
- Environmental Education (PreK-12)
- Family-Consumer Science (PreK-12)
- Health (PreK-12)
- Hearing Impaired (PreK-12)
- Language (PreK-12)
 - English
 - French
 - German
 - Latin
 - Russian
 - Spanish
- Library Science (PreK-12)
- Social Sciences (7-12)
- Social Studies (7-12)
- Upper Elementary/Middle Level (Grades 4-8) Education

The following programs will be permitted graduation credit totals not to exceed 129 credits through spring 2011, at which time the exceptions will be reviewed:

- Art (PreK-12)
- Business-Computer-Information Technology (PreK-12)
- Citizenship (7-12)
- Health and Physical Education (Pre-K-12)
- Mathematics (7-12)
- Music (PreK-12)
- Science (7-12)

- Biology
- Chemistry
- Earth and Space
- General Science
- Physics
- Technology Education (PreK-12)

The following programs will be permitted graduation credit totals not to exceed 135 credits through spring 2011, at which time the exceptions will be reviewed:

- Special Education/PreK-4 Dual Certification
- Special Education/Upper Elementary/Middle Level (4-8) Dual Certification

Other

The following programs will be permitted graduation credit totals not to exceed 123 credits through spring 2011, at which time the exceptions will be reviewed:

- Music
- Music Performance
- Music Therapy
- Music w/ Elective Studies in Business

Due to specific accreditation requirements, the following programs will be permitted graduation credit totals not to exceed 124 credits through spring 2011, at which time the exceptions will be reviewed:

Bloomsburg

- B.S. Electrical and Electronics Engineering Technology

California

- B.S. Electrical Engineering Technology
- B.S. Computer Engineering Technology

The following programs will be permitted graduation credit totals not to exceed 126 credits through spring 2011, at which time the exceptions will be reviewed:

- Respiratory Therapy



PA State System of Higher Education Board of Governors

Effective: October 17, 1991

Page 1 of 5

POLICY 1991-06-A: STATE SYSTEM AUDIT POLICY

See Also:

Adopted: October 17, 1991

Amended: July 12, 2001

Amended: October 12, 2006

Amended: July 16, 2009

I. Audit Committee

A. Purpose

The primary mission of the Audit Committee shall be to assist the Board of Governors in exercising its due care and diligence in discharging System-wide oversight and monitoring responsibilities. An important objective of the Audit Committee shall be to support and oversee the activities of the office of internal audit and risk assessment ~~internal review group~~, maximizing the function's operations and value across the State System.

B. Organization

The Audit Committee shall be a permanent committee consisting of six members of the Board of Governors. The chairman of the Board shall appoint the chair and other members of the Audit Committee. The Audit Committee shall meet at least twice a year. The chair of the Audit Committee, however, shall have the authority to call a meeting whenever necessary. The System's chief counsel and director of the office of internal audit and risk assessment ~~review group~~ shall serve as staff to the Audit Committee.

C. Policy

The Audit Committee shall assist the Board of Governors in discharging its System-wide oversight and monitoring responsibilities by:

1. Promoting the development of an effective and continuously improving control environment to achieve the System's goals and objectives.

2. Overseeing the System's internal control environment and risk assessment practices.
3. Serving as a voice on the Board of Governors and other standing committees by relaying an audit perspective when related issues are brought before the committees.
4. Providing a direct channel of communications to the Board of Governors for the System's independent public accounting firm and office of internal audit and risk assessment review group.

D. Procedures

Specific duties of the Audit Committee shall include the following:

1. Approve the appointment of the director of the office of internal audit and risk assessment review group, and the department's annual budget and staffing.
2. Review and approve the scope of the office of internal audit and risk assessment's review group's annual work plan.
3. Request the performance of supplemental reviews or other audit procedures, including investigations when necessary.
4. Meet with the System's independent public accountants and director of the office of internal audit and risk assessment review group to review the results of their annual work. This shall include:
 - a. A review, in advance of final issuance, of the System's annual audit opinion, financial statements, and management letter;
 - b. A timely review of any significant risks, and disposition of findings and recommendations, including corrective actions taken or in progress;
 - c. At least annually, provide an opportunity for members of the Audit Committee to meet with representatives of the independent public accounting firm and the director of the office of internal audit and risk assessment review group, without other System management personnel present; and
 - d. A review of the disposition of audit findings and recommendations contained in reports of the Department of the Auditor General, as well as other audits by outside agencies that may arise.

5. Annually report to the full Board of Governors on the Audit Committee's activities.

II. Office of Internal Audit and Risk Assessment Review Group

A. Purpose

To provide policy for establishment and support of a System internal audit and risk assessment review function. In carrying out their duties and responsibilities, members of the office of internal audit and risk assessment review group shall have full, free, and unrestricted access to all System records, property, and personnel except where such access may be limited or barred by federal or state law, or the provisions of a relevant collective bargaining agreement. No private agreement between the System and a third party shall be used to limit the applicability of this section unless reviewed and approved by the Office of Chief Counsel.

B. Objectives

1. Establish an ongoing, independent capability to review all System operations, including affiliated organizations where appropriate, to:
 - a. ensure compliance with statutes, regulations, and policies;
 - b. review reliability and integrity of financial data, operating information, and the means used to identify, measure, classify and report it;
 - c. make value-added recommendations for improvements regarding economy, efficiency, and effectiveness; and
 - d. perform appropriate follow-up procedures and assess the effectiveness of actions taken.
2. Establish an ongoing, collaborative risk assessment process managed by the office of internal audit and risk assessment and including each of the System universities and the Office of the Chancellor.
 - a. The office of internal audit and risk assessment will facilitate conversations and exercises in a multi-layered risk assessment approach initiating with a university president and senior management, then secondarily with line management and personnel in the identification of potential risks. The same multi-layered approach will be employed within the Office of the Chancellor.

- b. The adequacy of internal controls supporting operations will be evaluated.
 - c. Identified operations with significant operating exposure to a university and/or the Office of the Chancellor, and where appropriate internal controls are not evident, will be defined as a potential high risk exposure.
 - d. Potential high risk exposures at an institution will be communicated and discussed with the university's president. Potential high risk exposures identified at the System level will be communicated with the Chancellor.
 - e. Consideration will be given by the President and/or Chancellor for further evaluation of the risk exposure as part of a more detailed internal audit analysis.
 - f. Risk assessment outcomes will be utilized in development of a prioritized annual internal audit work plan based on recognized levels of risk exposure and possible resulting liabilities.
 - g. Audit outcomes will include recommendations for consideration by a university president and/or the Chancellor to strengthen internal controls through a change in operational and/or financial practices, documented policies, guidelines, etc.
3. Serve as in-house management consultants to the System. University presidents and the chancellor may request assistance from the office of internal audit and risk assessment ~~review group~~ on an as needed basis to review special issues, including strategic plan initiatives, and/or conduct such audits on the campuses and in the System headquarters as may be requested.
 4. Act as liaison to the Department of the Auditor General and Office of Inspector General on System matters related to inquiries, referrals, and investigations.

C. Policy

1. There shall be created an organizational element within the Office of the Chancellor known as the office of internal audit and risk assessment ~~review group~~. The director of the office of internal audit and risk assessment ~~review group~~ shall report functionally to the Audit Committee of the Board of Governors and administratively to the System's ~~Chancellor~~ chief counsel.

2. The office of internal audit and risk assessment ~~review group~~ shall serve as in-house management consultants to the System. University presidents and the chancellor may request assistance from the department ~~internal review group~~ on an as needed basis to review special issues, including strategic plan initiatives, and/or conduct such audits on the campuses and in the System headquarters as may be requested.
3. A committee comprised of the System's chief counsel, Chancellor, director of internal audit and risk assessment ~~review~~, and appropriate vice chancellor shall review and approve requests for assistance to conduct special reviews and investigations.
4. The office of internal audit and risk assessment ~~review group~~ shall follow the System's administrative directive 1991-06.01, *Procedures for Conducting Investigations*, when assisting the Audit Committee, universities, and the Office of the Chancellor in conducting investigations.
5. The office of internal audit and risk assessment's ~~review group's~~ cost shall be funded as a Board of Governors expense to the legislative appropriation prior to allocation based on the System's funding formula. ~~allocated to the universities and the Office of the Chancellor based on their pro-rata share of educational and general expenses.~~
6. The scope of work of the office of internal audit and risk assessment ~~review group~~ shall encompass all System operations, including affiliated organizations where appropriate, academic instruction by the faculty excepted.
7. University presidents and the chancellor may be requested to supplement the office of internal audit and risk assessment ~~review group~~ staffing with personnel who have special skills or training. This suggested "consultant" approach will help to minimize the permanent staffing of the ~~internal~~ department ~~review group~~.
- ~~8. University presidents shall designate a campus representative as liaison to the internal review group. The individual appointed shall be the university's internal auditor or another representative. As stated in Board of Governors' Policy 1986-01: Audit, "The establishment of an independent internal audit function at each university shall be advocated and respected as a responsible management practice."~~
9. 8. All completed reviews, special projects, and investigations conducted by the office of internal audit and risk assessment ~~review group~~ shall be made available to the Audit Committee, Chancellor, and to the local University Council of Trustees for issues applicable to their institution.

PENNSYLVANIA STATE SYSTEM OF HIGHER EDUCATION OFFICE OF INTERNAL AUDIT and RISK ASSESSMENT 2009-10 ANNUAL WORK PLAN

2009-10 Work Plan Initiatives – July through December 2009

Departmental Staffing – Under the approved restructuring plan, complete actions necessary to secure audit staff necessary to fulfill the mission and objectives of the Office of Internal Audit and Risk Assessment.

Communicate PASSHE's Risk Assessment Initiatives – Work with System colleagues providing the basis for implementing a multi-layered risk assessment process with an overarching goal of developing a prioritized internal audit plan based on recognized levels of risk exposure and potential resulting liabilities. Specific work will include a pilot process at one PASSHE university and the Office of the Chancellor. Assessments will be based on strategic, financial, operational, compliance, reputational, and environmental risks impacting the entities analyzed.

Carry-over 2008-09 Annual Work Plan Projects – Completion of eight projects currently in process related to Travel Policies and Reimbursed Expenses, Parking Fines, Tuition and Fee Waivers, and Work Study Employment. Audit work will be completed and final reports detailing internal audit outcomes will be issued.

Special Projects – Board of Governors Policy 1991-09-A, *State System Audit Policy*, provides for the Office of Internal Audit and Risk Assessment to conduct special project audits and investigations as requested by the Board of Governors, the Chancellor and University Presidents, as well as outside entities, e.g. the Commonwealth's Auditor General or Inspector General.

2009-10 Work Plan Initiatives – January through June 2010

Based on staffing, projects will be identified and determined contingent on the total number of auditor personnel hours available. A detail of proposed audit engagements including project categories of risk assessment, governance, compliance, IT controls, financial, operational, reputational, miscellaneous, and special projects will be provided at the January 2010 Board of Governors meeting for approval.

BUDGET SUMMARY

Function: Office of Internal Audit and Risk Assessment

Cost Proration Basis: Funded as a direct Board of Governors expense to the legislative prior to allocation to universities.

		FY 2007/08 Actual	FY 2008/09 Projected	% Change	FY 2008/09 Budget	FY 2009/10 Budget Request
FTE Complement:	Authorized	3.00	3.00	0.0%	3.00	7.00
	Filled	3.00	2.65	-11.7%	3.00	7.00
Revenue		\$0	\$0	—	\$0	\$0
Personnel Expenditures:						
	Salary	233,022	250,276	7.4%	245,962	509,956
	Benefits	77,187	79,986	3.6%	80,552	211,410
Total Personnel Expenditures		310,209	330,262	6.5%	326,514	721,366
Operating Expenditures:						
	Postage/Freight	76	100	31.6%	100	233
	Telecommunications Charges	0	0	—	0	0
	Advertising	0	0	—	0	0
	Subscriptions	83	100	20.5%	100	233
	Memberships	480	600	25.0%	600	1,800
	Printing and Duplicating	0	0	—	0	0
	Travel and Transportation	4,506	11,000	144.1%	10,000	45,000
	Computing and Data Processing	0	0	—	0	0
	Professional Development	0	0	—	0	15,000
	Other Services	228	400	75.4%	400	400
	Insurance	0	0	—	0	0
	Utilities	0	0	—	0	0
	Rental and Lease (Excluding Vehicles)	0	1,300	—	0	4,900
	Miscellaneous Services	0	0	—	0	0
	Supplies	210	500	138.1%	700	1,167
	Overhead	53,957	48,328	-10.4%	48,328	70,013
	Payments to PASSHE Universities	0	0	—	0	0
	Expensed Assets	0	0	—	8,317	0
	Renewal and Replacement Transfer	2,806	1,498	-46.6%	1,498	17,232
Total Operating Expenditures		62,346	63,826	2.4%	70,043	155,978
Capital Expenditures		0	0	—	0	0
Total Expenditures		372,555	394,088	5.8%	396,557	877,344
Less Renewal and Replacement Released		0	(8,317)	—	(8,317)	0
Net Expenditures		\$372,555	\$385,771	3.5%	\$388,240	\$877,344

**Pennsylvania State System of Higher Education
Allocation of the Fiscal Year 2009/10 Program Initiatives Line Item**

Performance Funding..... **TBD**

The Board of Governors has recognized performance at PASSHE Universities for the last seven years through the Performance Funding Program. In 2008/09, the program was funded with \$29.9 million from the E&G appropriation and \$10.0 million from the Program Initiatives line item, for a total of \$39.9 million, equivalent to 8% of the E&G appropriation. At its October 2008 meeting, the Board of Governors approved continuing performance funding at this level in 2009/10, partially through the use of this line item.

Information Technology **TBD**

PASSHE continues to enhance the System-wide integrated administrative system that is used to maximize efficiency of administrative processing (i.e., procurement, budget, accounting, human resources management, and payroll) and to support decision support requirements at all 14 Universities and the Office of the Chancellor. The resulting data from administrative processes are used with a robust data warehouse system for PASSHE and University reporting and data analysis. Continued funding for this project is necessary to support implementation of additional functionality, upgrades to the administrative application and required hardware, and disaster recovery.

Economic and Workforce Development..... **TBD**

PASSHE Universities are key partners for state and regional economic development. Their mission-based contribution to economic and workforce development is increasing human capital for tangible productivity and income benefits, creating intellectual wealth for commercialization potential. Continuation of funding for the economic and workforce development initiatives will enhance PASSHE's partnerships with state and local communities to increase economic and workforce development throughout the regions of the Commonwealth.

Funding has been used to support the expansion of student internships and the development of Entrepreneurial Leadership Centers and university business infrastructure.

Educator Excellence..... **TBD**

The Educator Excellence component of the Program Initiatives line item will build upon the strengths of PASSHE Universities and the Pennsylvania Academy for the Profession of Teaching and Learning. This funding will support efforts to improve the quality of teachers, school administrators, and programs designed to improve education at all levels. Among the activities that have been funded are: (1) enhancing the quality of preparation for PK-8 educators; (2) improving preparation of education students for the PRAXIS test; (3) increasing the number of qualified teachers and other professionals for urban school districts; (4) increasing the number and quality of science and mathematics teachers; (5) enhancing the skills of current teachers and administrators through professional development; and (6) increasing the diversity of the teacher work force.

Cheyney Revitalization..... **TBD**

Funding is sought to assist in Cheyney University of Pennsylvania’s revitalization efforts in various areas that will, in turn, increase the enrollment at the University and continue the rich legacy that has been created there.

**Pennsylvania State System of Higher Education
Funding of System-Wide Initiatives from the Fiscal Year 2009/10 E&G Appropriation**

Office of Internal Audit and Risk Assessment—Formerly named the Internal Review Group, the functions performed in this office have been funded through Consolidated University Operations (CUO) payments. As reflected in item 1 of the Audit Committee’s agenda, there is a need to develop a formalized process for assessing and managing risk within the organization. Therefore, PASSHE’s internal audit function is being expanded to provide a cohesive organizational structure responsible for facilitating risk assessment activities and, in turn, structuring an internal audit plan based on high risk areas. Outcomes will provide stronger reporting of risk factors and internal control weaknesses, with their potential impact on operations, to the Audit Committee of the Board of Governors, Chancellor, University Presidents, and University Councils of Trustees. In fiscal year 2009/10, the total appropriation recommended to begin expansion of this office is \$500,000.

Professional Development Funds—The collective bargaining agreement with the Association of Pennsylvania State College and University Faculties (APSCUF) continued the Faculty Professional Development Program with a fiscal year 2009/10 funding requirement of \$150,000 for current faculty members and \$50,000 for probationary faculty members. The new collective bargaining agreement between PASSHE and the State College and University Professional Association (SCUPA) will require \$85,000 for its professional development program. In fiscal year 2005/06, during negotiations for the previous SCUPA contract, \$75,000 was set aside in good faith to fund this development program. As part of the final contract, no funding was required for that year; therefore, the money is now available for use. It will be added to the \$10,000 that is being set aside in the 2009/10 budget to create the \$85,000 pool that is needed.

Dixon University Center Academic Programs—The academic programming performed at the Dixon University Center has been funded partially through the E&G appropriation for many years. The total appropriation recommended for continuation of these academic services and associated maintenance of the Dixon University Center site is \$1,400,000. This represents level funding for these activities from the previous year.

Replenishment of the System Reserve—The total recommended allocation to the System Reserve for Fiscal Year 2009/10 is \$662,860, which will replenish the System Reserve to the \$1,500,000 level required by Board of Governors’ Policy 1984-07-A: *System Reserve Allocation and Expenditure Criteria*. Attachment 2 is a detailed list of expenditures for fiscal year 2008/09 and a list of projected expenditures for fiscal year 2009/10. The amount to be replenished is less than the total expenditures, due to interest earnings.

McKeever Environmental Learning Center—An allocation of \$368,332 is recommended for operation of the McKeever Environmental Learning Center by Slippery Rock University of Pennsylvania. This funding level augments its line item appropriation and represents level funding in McKeever’s share of the E&G appropriation.

**Pennsylvania State System of Higher Education
Report of Expenditures from the System Reserve**

Actual 2008/09 Expenditures

Presidential Search (West Chester)	\$1,839
California Property Appraisal	3,950
Clarion Property Appraisal	4,200
Cheyney 2000 (expended balance of previously designated funds)	19,987
Presidential Residence (West Chester)	613,860
System Financial Audit (Fiscal Year 2007/08)	<u>74,814</u>

Total Anticipated Fiscal Year 2008/09 Expenditures **\$718,650**

Anticipated 2009/10 Expenditures

System Financial Audit (Fiscal Year 2008/09)	\$77,500
Presidential Residence (West Chester)	<u>30,000</u>

Total Anticipated Fiscal Year 2009/10 Expenditures **\$107,500**

**Pennsylvania State System of Higher Education
Fiscal Year 2009/10 Tuition Schedule**

Student Classification	2008/09	2009/10	Change
Full-Time Academic Year			
Resident Undergraduate	\$5,358.00		
Resident Graduate	\$6,430.00		
Nonresident Undergraduate:			
Maximum (250%)*	\$13,396.00		
\$2,000 less than Maximum (LO)	\$11,396.00		
225% (SH**)	\$12,056.00		
200% (CH**, CL**, SL**)	\$10,716.00		
165% (MA**)	\$8,842.00		
160% (CA)	\$8,574.00		
150% (CL**, EA**, ED**, IN**, SH**, SL**, MSC**)	\$8,038.00		
Nonresident Graduate	\$10,288.00		
Full-Time Semester			
Resident Undergraduate	\$2,679.00		
Resident Graduate	\$3,215.00		
Nonresident Undergraduate:			
Maximum (250%)*	\$6,698.00		
\$2,000 less than Maximum (LO)	\$5,698.00		
225% (SH**)	\$6,028.00		
200% (CH**, CL**, SL**)	\$5,358.00		
165% (MA**)	\$4,421.00		
160% (CA)	\$4,287.00		
150% (CL**, EA**, ED**, IN**, SH**, SL**, MSC**)	\$4,019.00		
Nonresident Graduate	\$5,144.00		
Per Student Credit Hour***			
Resident Undergraduate	\$223.00		
Resident Graduate	\$357.00		
Nonresident Undergraduate:			
Maximum (250%)*	\$558.00		
\$2,000 less than Maximum (LO)	\$475.00		
225% (SH**)	\$502.00		
200% (CH**, CL**, SL**)	\$447.00		
165% (MA**)	\$368.00		
160% (CA)	\$357.00		
150% (CL**, EA**, ED**, IN**, SH**, SL**, MSC**)	\$335.00		
Nonresident Graduate	\$572.00		
Nonresident Undergraduate Distance Education, Minimum	\$227.00		
Nonresident Undergraduate Distance Education, Maximum	\$558.00		
Nonresident Graduate Distance Education, Minimum	\$364.00		
Nonresident Graduate Distance Education, Maximum	\$893.00		

Note: Final 2009/10 tuition recommendations will be developed at the Board of Governors' Finance, Administration, and Facilities Committee meeting on July 15, 2009.

MSC=Marine Science Consortium

*Charged to all nonresidents not specifically addressed by a University-based Nonresident Tuition Plan, including all international students, who are charged the maximum nonresident rate.

**Applies to certain nonresident students, based upon geographic location, academic program, or academic standing.

***For part-time student charges, and summer and interim sessions.

**Pennsylvania State System of Higher Education
Fiscal Year 2009/10 Technology Tuition Fee Schedule**

Student Classification	2008/09	2009/10	Increase	
Full-Time Academic Year				
Resident Undergraduate	\$175.00	Note: Final 2009/10 technology tuition fee recommendations will be developed at the Board of Governors' Finance, Administration, and Facilities Committee meeting on July 15, 2009.		
Nonresident Undergraduate	\$264.00			
Resident Graduate	\$175.00			
Nonresident Graduate	\$264.00			
Full-Time Semester				
Resident Undergraduate	\$87.50			
Nonresident Undergraduate	\$132.00			
Resident Graduate	\$87.50			
Nonresident Graduate	\$132.00			
Part-Time (Flat rate for all part-time students)*				
Resident Undergraduate (less than 12 credits)	\$43.00			
Nonresident Undergraduate (less than 12 credits)	\$65.00			
Resident Graduate (less than 9 credits)	\$43.00			
Nonresident Graduate (less than 9 credits)	\$65.00			

*For part-time student charges, and summer and interim sessions.

Capital Spending Plan
Fiscal Years 2009/10 Through 2013/14
As Presented to the Board of Governors
July 15, 2009

Financial Summary in Current Year Dollars (\$000)						
University	FY 2009/10	FY 2010/11	FY 2011/12	FY 2012/13	FY 2013/14	Five-Year Total
Bloomsburg	\$9,980			\$22,700		\$32,680
California	19,100			6,400		25,500
Cheyney	55,600	\$16,240	\$500			72,340
Clarion		1,100	25,400	14,943	\$2,600	44,043
East Stroudsburg	656	4,823	27,330	2,572		35,381
Edinboro	14,850	1,400	14,561	1,500		32,311
Indiana		4,950	38,925	3,417	66,475	113,767
Kutztown	400	7,125		17,040		24,565
Lock Haven		4,620	3,720	8,566		16,906
Mansfield	5,882	1,100		5,079		12,061
Millersville		19,490	9,500		8,850	37,840
Shippensburg	19,600	19,000		9,188		47,788
Slippery Rock	3,870	31,050	3,774		32,966	71,660
West Chester	2,144	15,400		27,025	7,000	51,569
Annual Total	\$132,082	\$126,298	\$123,710	\$118,430	\$117,891	\$618,411

Financial Summary in Future Year Dollars (\$000)						
Allowing for Inflation at 3% Annually						
University	FY 2009/10	FY 2010/11	FY 2011/12	FY 2012/13	FY 2013/14	Five-Year Total
Bloomsburg	\$9,980			\$24,800		\$34,780
California	19,100			7,000		26,100
Cheyney	55,600	\$16,500	\$500			72,600
Clarion		1,100	26,900	16,300	\$2,900	47,200
East Stroudsburg	656	5,000	29,000	2,800		37,456
Edinboro	14,850	1,400	15,400	1,600		33,250
Indiana		5,100	41,300	3,700	74,800	124,900
Kutztown	400	7,300		18,600		26,300
Lock Haven		4,700	3,900	9,400		18,000
Mansfield	5,882	1,100		5,500		12,482
Millersville		20,000	10,100		9,800	39,900
Shippensburg	19,600	19,600		10,000		49,200
Slippery Rock	3,870	31,900	4,000		37,100	76,870
West Chester	2,144	15,800		29,600	7,900	55,444
Annual Total	\$132,082	\$129,500	\$131,100	\$129,300	\$132,500	\$654,482

**FY 2009/10 Through FY 2013/14 Project Execution Schedule
As Presented to the Board of Governors
July 15, 2009**

Proposed Execution Year	University	Project Description	OF&E	Authorization Act	Total Authorization (\$000)	Facility Use	University Funds (\$000)	Commonwealth Funding Adjusted for Inflation at 3%/Year (\$000)
2009/10	Bloomsburg	Sutliff Hall Addition		40/04, Sbmted	11,300	Business Education	3,000	\$7,450
			OF&E	131/02, 41/08	1,280	Business Education		1,280
		Nelson Field House Renovation	OF&E	40/04	1,500	Athletics		1,250
	California	New Convocation Center Construction		40/04	38,400	Athletics	34,400	19,100
	Cheyney	Carver Science Building Renovation		83/06, 41/08	25,000	Science and Technology		17,000
		New Student Housing Construction		41/08	45,000	Housing		38,000
		Additional Funds for Humphreys Hall Renovation		41/08	8,800	Housing		600
	East Stroudsburg	Monroe Hall Renovation	OF&E	40/04	656	General Education		656
	Edinboro	Cooper Science Renovation	OF&E	131/02, Sbmted	2,300	Science and Technology		2,300
		Institute for Human Services Construction	OF&E	40/04	550	Science and Technology		550
		Ross Hall Renovation or Replacement		41/08	18,000	IT Backbone		12,000
	Kutztown	Maintenance Building Upgrade, Garage Demolition	OF&E	83/06	400	Utilities Infrastructure		400
	Mansfield	Allen Hall Renovation/Replacement	OF&E	223/90	288	General Education		288
		Water Treatment Plant Renovation		41/08	6,000	Utilities Infrastructure		2,600
		Additional Funds for Grant Science Renovation		40/04	10,993	Science and Technology		1,893
		Additional Funds for Allen Hall Renovation/Replacement		40/04, 83/06	8,500	General Education		1,101
	Shippensburg	Huber Arts Center Renovation	OF&E	40/04, 41/08	1,100	Arts and Music		1,100
		Steam and Chilled Water Distribution System Renovation/Replacement		41/08	20,000	Utilities Infrastructure		18,500
	Slippery Rock	Central Boiler Plant Renovation, Phase 3		40/04	3,500	Utilities Infrastructure		2,430
		Old Vincent Science Renovation	OF&E	131/02	1,440	Science and Technology		1,440
	West Chester	EO Bull Center Renovation	OF&E	131/02	944	Arts and Music		944
		Additional Funds for Mitchell Hall Renovation		83/06	9,000	General Education		1,200
	2009/10 Total							

Proposed Execution Year	University	Project Description	OF&E	Authorization Act	Total Authorization (\$000)	Facility Use	University Funds (\$000)	Commonwealth Funding Adjusted for Inflation at 3%/Year (\$000)
2010/11	Cheyney	Browne Hall Renovation		83/06, 41/08	5,500	Housing		\$4,300
		Carver Science Building Renovation	OF&E	Sbmted	2,100	Science and Technology		2,100
		New Student Housing Construction	OF&E	Sbmted	4,500	Housing		4,500
		Demolition of Various Buildings				Mixed Usage		5,600
	Clarion	Becht Hall Renovation	OF&E	40/04, 83/06	1,100	Administration		1,100
	East Stroudsburg	Information Commons Construction, Phase 1				Mixed Usage	3,000	5,000
	Edinboro	Ross Hall Renovation or Replacement	OF&E			IT Backbone		1,400
	Indiana	Keith and Leonard Renovation Design				General Education		5,100
	Kutztown	Shaeffer Auditorium Renovation and Addition	OF&E	40/04, 41/08	1,600	Performing Arts		1,100
		69 KV Electrical Substation Construction		Sbmted	8,000	Administration		6,200
	Lock Haven	Science and Math Center Renovation/Construction, East Campus	OF&E	83/06, Sbmted	3,000	Science and Technology		3,000
		E&G Structures Demolition		40/04	1,620	Administration		1,700
	Mansfield	Grant Science Renovation	OF&E	40/04	1,100	Science and Technology		1,100
	Millersville	Ganser Library Renovation	OF&E	Sbmted	1,600	Libraries		1,600
		Additional Funds for Ganser Library Renovation		131/02	15,986	Libraries		8,500
		Additional Funds for Electrical Utilities Upgrade		131/02	7,128	Utilities Infrastructure		9,900
	Shippensburg	Campus Steam/Chilled Water Plant Replacement		41/08	30,000	Utilities Infrastructure		19,600
	Slippery Rock	New Performing Arts Center		83/06, Sbmted	40,000	Performing Arts	11,601	29,100
		Additional Funds for Central Boiler Plant Renovation, Phase 3				Utilities Infrastructure		2,800
	West Chester	Mitchell Hall Renovation	OF&E			Arts and Music		1,200
Campus Geothermal Utility Conversion, Phase 2			Sbmted	13,000	Utilities Infrastructure		14,600	
2010/11 Total								\$129,500
2011/12	Cheyney	Browne Hall Renovation	OF&E	83/06	500	Mixed Usage		\$500
	Clarion	Tippin Gymnasium Renovation and Expansion		41/08	40,000	Athletics		26,900
	East Stroudsburg	Information Commons Construction, Phase 1				Mixed Usage	23,840	29,000
	Edinboro	Maintenance Building Replacement		83/06, 41/08	17,600	Administration		15,400
	Indiana	Keith Hall Renovation		83/06, 131/02, Sbmted	21,729	General Education		14,400
		Leonard Hall Renovation		131/02 41/08	15,336	General Education		15,400
		Weyandt/Walsh Hall Renovation or Replacement—Design and Real Estate		Sbmted	70,000	Science and Technology		11,500
	Lock Haven	Fiber-Optic Infrastructure Upgrade		131/02, Sbmted	5,720	IT Backbone		3,900
	Millersville	Stayer (Jefferson Hall) Building Renovation		41/08, Sbmted	11,000	Athletics		10,100
	Slippery Rock	New Performing Arts Center	OF&E	83/06	3,000	Performing Arts		4,000
2011/12 Total								\$131,100

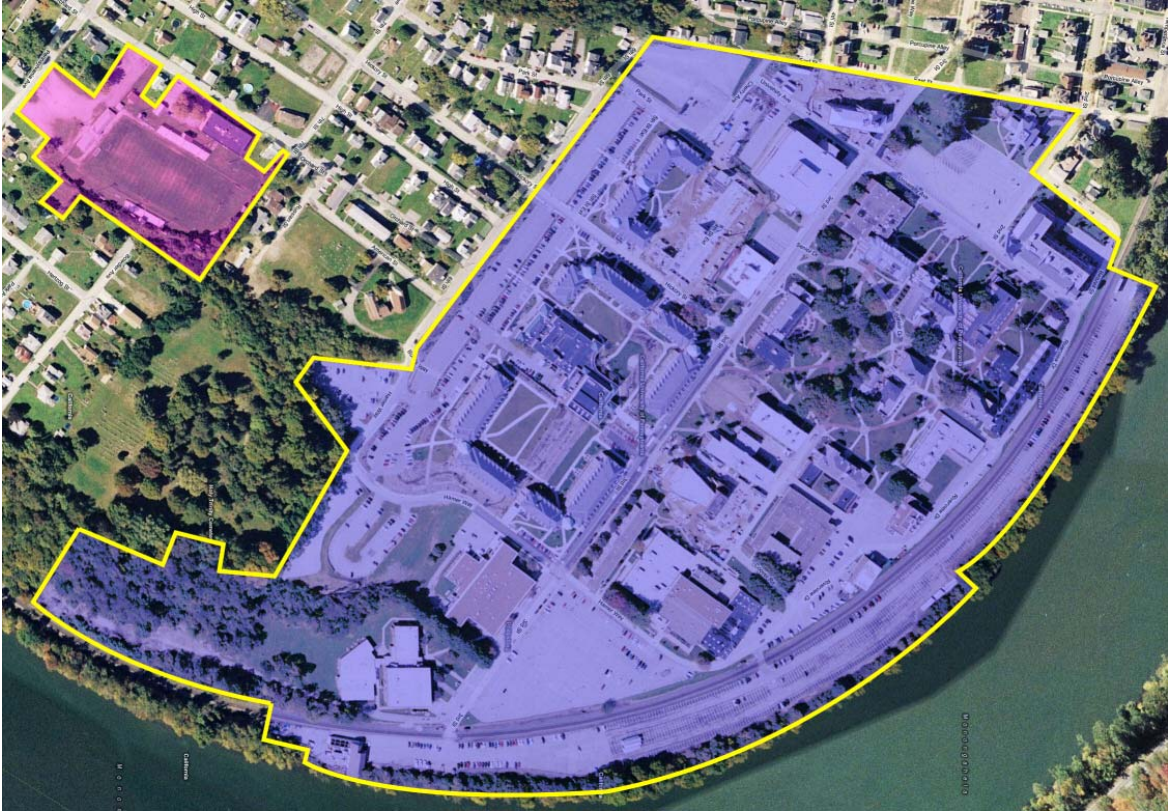
Proposed Execution Year	University	Project Description	OF&E	Authorization Act	Total Authorization (\$000)	Facility Use	University Funds (\$000)	Commonwealth Funding Adjusted for Inflation at 3%/Year (\$000)
2012/13	Bloomsburg	Waller Administration Building Renovation		40/04, 41/08	12,500	Mixed Usage		\$24,800
	California	Pedestrian and Vehicular Enhancements, Phase 1		131/02, 41/08	6,592	Utilities Infrastructure		7,000
	Clarion	Becker Hall Renovation		131/02, Sbmt	23,300	Science and Technology		16,300
	East Stroudsburg	Information Commons Construction, Phase 1	OF&E			Mixed Usage		2,800
	Edinboro	Maintenance Building Replacement	OF&E	83/06, Sbmt	1,650	Administration		1,600
	Indiana	Keith and Leonard Renovation	OF&E	131/02, Sbmt	3,417	General Education		3,700
	Kutztown	Lytle Hall Educational Building Demolition and Replacement/Expansion		41/08	30,000	General Education		18,600
	Lock Haven	South Ulmer Hall Renovation		131/02, Sbmt	11,566	General Education		9,400
	Mansfield	Straghn Auditorium Renovation				Performing Arts		5,500
	Shippensburg	Electrical Distribution System Renovation		40/04	8,730	Utilities Infrastructure		6,700
		Telecommunications Distribution System Renovation		Sbmt	4,000	IT Backbone		3,300
	West Chester	McCarthy Hall Renovation/Conversion		41/08	20,000	General Education		18,300
		Campus Geothermal Utility Conversion, Phase 3				Utilities Infrastructure		11,300
2012/13 Total								\$129,300
2013/14	Clarion	Tippin Gymnasium Renovation and Expansion	OF&E	131/02, Sbmt	3,095	Athletics		\$2,900
	Indiana	Weyandt/Walsh Hall Renovation or Replacement		Sbmt	70,000	Science and Technology		74,800
	Millersville	Brooks Hall Renovation		Sbmt	12,000	Athletics		8,800
		Stayer (Jefferson Hall) Building Renovation	OF&E	Sbmt	1,000	Athletics		1,000
	Slippery Rock	Bailey Library Renovation/Addition		Sbmt	44,000	Libraries		37,100
	West Chester	Old Library Renovation				General Education		7,900
2013/14 Total								\$132,500

Sbmt = A request for authorization was submitted in October 2008.
OF&E = Original Furniture and Equipment

Agency: Pennsylvania State System of Higher Education Capital Budget Authorization Request Departmental Summary of Requests (Dollars in Thousands) Public Improvement Projects		Source of Funds	Agency Request	OB Recommended	Difference
		Bond.....	\$379,100	\$0	\$0
		Current.....	0	0	0
		Federal.....	0	0	0
		Local.....	0	0	0
		Other.....	0	0	0
		Total.....	\$379,100	\$0	\$0
Priority No.	Project Title/Comments	Location	Source of Funds	Agency Request	OB Recommended
(1)	(2)		(3)	(4)	(5)
1	Demolition of Various Buildings	Cheyney	B	\$5,600	
2	Information Commons Construction, Phase 1	East Stroudsburg	B	36,000	
3	Electrical Utilities Upgrade (Additional Funds)	Millersville	B	3,500	
4	Central Boiler Plant Renovation, Phase 3 (Additional Funds)	Slippery Rock	B	4,000	
5	Geothermal Utility and Heating Plant Conversion, Phase 2 (Additional Funds)	West Chester	B	2,000	
6	Weyandt/Walsh Hall Renovation or Replacement (Additional Funds)	Indiana	B	20,000	
7	Waller Administration Building Renovation (Additional Funds)	Bloomsburg	B	15,000	
8	Pedestrian & Vehicular Enhancements, Phase 1 (Additional Funds)	California	B	1,000	
9	Straghn Auditorium Renovation	Mansfield	B	6,000	
10	Geothermal Utility and Heating Plant Conversion, Phase 3	West Chester	B	15,000	
11	Old Library Renovation	West Chester	B	15,000	
12	Information Commons Construction, Phase 2	East Stroudsburg	B	40,000	
13	Lawrence Hall Renovation (Additional Funds)	West Chester	B	2,000	
14	Ganser Library Renovation (Additional Funds)	Millersville	B	10,000	
15	Coover Hall Renovation	California	B	14,500	
16	Stapleton/Stabley Library Renovation	Indiana	B	35,000	
17	Heiges Field House Renovation and Addition	Shippensburg	B	50,000	
18	Morgan Hall Renovation	California	B	17,500	
19	B.F. Library Addition and Renovation	Edinboro	B	65,000	
20	Cooper Science (Additional Funds)	Edinboro	B	12,000	
21	Carver Science Building (Additional Funds)	Cheyney	B	10,000	
TOTAL				\$379,100	\$0

Agency: Pennsylvania State System of Higher Education Capital Budget Authorization Request Departmental Summary of Requests (Dollars in Thousands) Original Furniture and Equipment		Source of Funds	Agency Request	OB Recommended	Difference
		Bond.....	\$25,500	\$0	\$0
		Current.....	0	0	0
		Federal.....	0	0	0
		Local.....	0	0	0
		Other.....	0	0	0
		Total.....	\$25,500	\$0	\$0

Priority No.	Project Title/Comments	Location	Source of Funds	Agency Request	OB Recommended
(1)	(2)		(3)	(4)	(5)
1	Ross Hall Renovation or Replacement	Edinboro	B	\$1,500	
2	Mitchell Hall Renovation	West Chester	B	1,500	
3	New Performing Arts Center (Additional Funds)	Slippery Rock	B	1,500	
4	Information Commons Construction, Phase 1	East Stroudsburg	B	3,600	
5	Keith Hall Renovation (Additional Funds)	Indiana	B	1,000	
6	Leonard Hall Renovation (Additional Funds)	Indiana	B	1,000	
7	Weyandt/Walsh Hall Renovation or Replacement (Additional Funds)	Indiana	B	2,000	
8	Bailey Library Renovation/Addition	Slippery Rock	B	4,500	
9	Waller Administration Building Renovation (Additional Funds)	Bloomsburg	B	1,000	
10	Weyandt/Walsh Hall Renovation or Replacement (Additional Funds)	Indiana	B	2,000	
11	Information Commons Construction, Phase 2	East Stroudsburg	B	4,000	
12	McCarthy Hall Renovation/Conversion (Additional Funds)	West Chester	B	900	
13	Strahn Auditorium Renovation	Mansfield	B	1,000	
			TOTAL	\$25,500	\$0



Aerial View of California University and Property Proposed for Purchase



Main Office Building
750 Orchard Street, California, Pennsylvania



Pennsylvania State System of Higher Education Board of Governors' Meeting Calendar

Unless otherwise noted, all meetings will be scheduled in the Administration Building, Dixon University Center, 2986 North Second Street, Harrisburg, Pennsylvania.

2009	Wednesday and Thursday Thursday Wednesday and Thursday	July 15 and 16 September 10* October 7 and 8
2010	Wednesday and Thursday Thursday Wednesday and Thursday Thursday Thursday Wednesday and Thursday Thursday Wednesday and Thursday	January 13 and 14 February 11* April 7 and 8 May 6* June 10* July 21 and 22 September 16* October 6 and 7
2011	Wednesday and Thursday Thursday Wednesday and Thursday Thursday Thursday Wednesday and Thursday Thursday Wednesday and Thursday	January 12 and 13 February 10* April 6 and 7 May 12* June 16* July 20 and 21 September 15* October 5 and 6
2012	Wednesday and Thursday Thursday Wednesday and Thursday Thursday Thursday Wednesday and Thursday Thursday Wednesday and Thursday	January 11 and 12 February 9* April 4 and 5 May 10* June 14* July 11 and 12 September 13* October 10 and 11

*Please hold these dates in reserve for special meetings of the Board, committee meetings, conferences, or workshops.

Revised: July 16, 2009



**Resolution Honoring the Contributions
of
Daniel P. Elby**

WHEREAS, Daniel P. Elby provided excellent service as a member of the Board of Governors of the Pennsylvania State System of Higher Education (PASSHE) since his appointment in May 1996; and

WHEREAS, Daniel P. Elby served as an adviser to the Chancellor and to the staff of the Pennsylvania State System of Higher Education as academic, financial, administrative, advancement and human resources policies were developed to guide PASSHE within the mission and strategic direction identified by the Board of Governors; and

WHEREAS, Daniel P. Elby served as a strident advocate for the enhancement of student, faculty and staff diversity at the individual universities and across the entire Pennsylvania State System of Higher Education; and

WHEREAS, Daniel P. Elby helped to raise the stature of the Pennsylvania State System of Higher Education through his service as a member of the Governor's Community Partnership for Safe Children, and, at the national level, as a member of both the Advisory Committee for Juvenile Justice and the National Coalition for Juvenile Justice; and

WHEREAS, Daniel P. Elby has served for more than 25 years as a member of the Council of Trustees at Lock Haven University of Pennsylvania, his alma mater;

NOW, THEREFORE, BE IT RESOLVED, that the Board of Governors of the Pennsylvania State System of Higher Education does acknowledge the many fine contributions of Daniel P. Elby to the Board and to the entire Pennsylvania State System of Higher Education, and

BE IT FURTHER RESOLVED, that the Board of Governors extends best wishes to him in all of his future endeavors.

Unanimously adopted by the Board
July 16, 2009

Kenneth M. Jarin, Chairman



**Resolution Honoring the Contributions
of
Kim E. Lyttle**

WHEREAS, Kim E. Lyttle provided excellent service as a member of the Board of Governors of the Pennsylvania State System of Higher Education (PASSHE) for nearly 15 years, including nine terms as Board vice chair, and, during much of his tenure, as chair of the Advancement Committee; and

WHEREAS, Kim E. Lyttle, as a long-time member of the Board's Executive Committee, served as an adviser to the Chancellor and to the staff of the Pennsylvania State System of Higher Education as academic, financial, administrative, advancement and human resources policies were developed to guide PASSHE within the mission and strategic direction identified by the Board of Governors; and

WHEREAS, Kim E. Lyttle represented PASSHE at the national level while serving three terms as a member of the Board of Directors of the Association of Governing Boards of Universities and Colleges in Washington, D.C.; and

WHEREAS, Kim E. Lyttle served for nearly 24 years as a member of the Council of Trustees at Indiana University of Pennsylvania, his alma mater; and

WHEREAS, Kim E. Lyttle serves as vice chair of the Board of Directors of the Pennsylvania State System of Higher Education Foundation and was instrumental in the establishment of the National City "Investing in Pennsylvania's Future" Scholarship Program to benefit students attending PASSHE universities;

NOW, THEREFORE, BE IT RESOLVED, that the Board of Governors of the Pennsylvania State System of Higher Education does acknowledge the many fine contributions of Kim E. Lyttle to the Board and to the entire Pennsylvania State System of Higher Education, and

BE IT FURTHER RESOLVED, that the Board of Governors extends best wishes to him in all of his future endeavors.

Unanimously adopted by the Board
July 16, 2009

Kenneth M. Jarin, Chairman